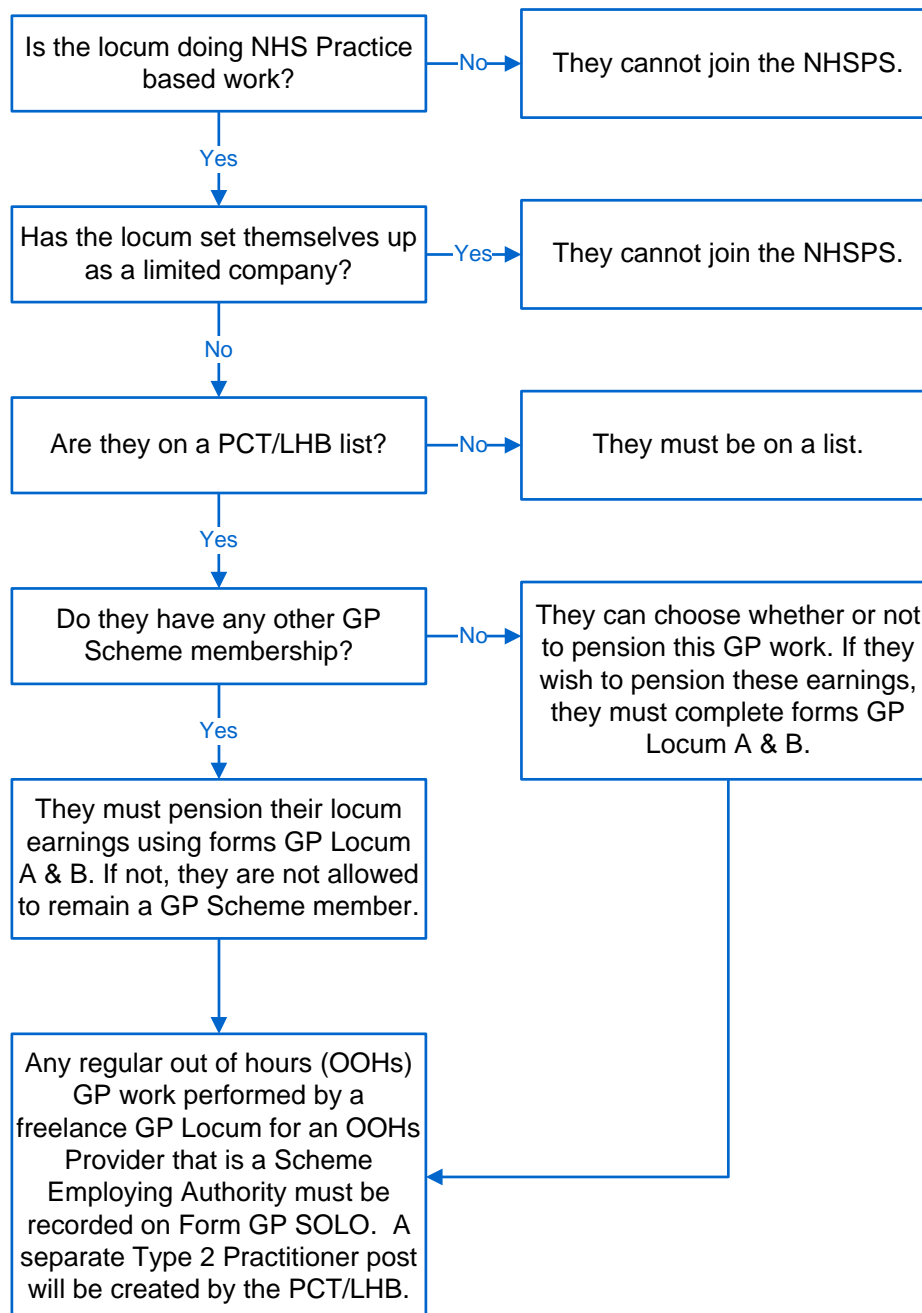


NHS Pension Scheme : GP Locums – Decision Tree

Can a GP Locum join the NHS Pension Scheme (NHSPS)?



When you receive forms GP Locum A & B for the first time you should create an employment on Pensions Online (POL) using e-form SS14. GP Locums are employment type 9 and use capacity code 3

You should then update annually using e-form SD55, or terminate the employment using e-form SD55T.