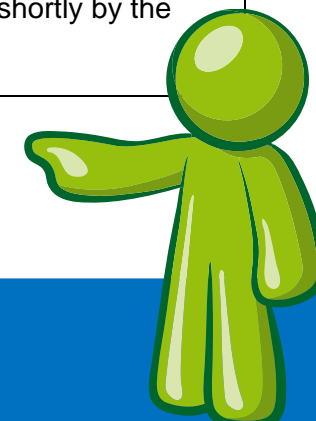


NHS Pensions Choice Roadshows FAQs

General

Question	Answer
Will we receive a list electronically of the employees over 50 receiving a statement and not getting a statement?	You will receive an electronic list of the statements to be issued along with a paper copy in each box of statements.
Why are the Choice statements not electronic?	Issuing statements electronically could present security and Data Protection issues. We believe that the present way of distributing statements is the safest way at present of ensuring the relevant members receive the information they need.
Will non-clinical partners receive NHS Pension Choice?	Non-GP Providers, Partners without any Practitioner membership at all will receive their Choice packs as part of the main distribution and their Choice packs will be sent to the PCT/LHB/Trust or whoever there employer is recorded as being.
Why has there been a lack of advertisement material?	If you need any additional communication material please contact the Choice Helpline for Employers on 0300 123 1701.
When will be meetings be held with the Pensions Departments?	Large employers eg Trusts and PCTs will be contacted shortly by the Support Team.



Question	Answer
<p>GP Practices are small employers. Will the support team visit Practice Manager Groups prior to the Choice exercise?</p>	<p>This is unlikely as there will be a limited number of staff available to carry out the visits to the larger employers in advance of Choice Statements being issued.</p>
<p>What lessons have been learned from the way the Scheme was opened out to Part-timers that have been carried forward to the Choices exercise (eg distribution, publicity, acknowledgement of receive, advice etc)?</p>	<p>NHS Pensions has worked in partnership with NHS Trades Unions, NHS Employers and the Department of Health in designing all of the publicity materials for the Choice Exercise and continues to do so and we believe that these will help all concerned. NHS Pensions also intends to work with Employers to ensure that the Choice Exercise runs as smoothly as it can, including the distribution of Choice Statements. We will also acknowledge receipt of Choice option forms received.</p>
<p>Is there a timescale for acknowledging Choice decisions?</p>	<p>All Choice decisions will be acknowledged as soon as possible after receipt by NHS Pensions.</p>
<p>What is the situation for staff intending to retirement in February 2010, if the Choice statements are not being issued until January 2010?</p>	<p>There is a clear process for retirees to obtain Choice statements in advance of Choice arriving in your Region, please see Choice Newsletter No 4 which clearly advises you of the correct process.</p>
<p>What is the reason for delivery signature, what are the risks and can Cornwall share the Board paper?</p>	<p>Obtaining signatures is best practice and would reduce the risk of employees claiming that they have not received their Choice statement or were unaware of the Choice Exercise.</p>
<p>If we have to return packs because of staff leaving our employment, how do we do this as they contain confidential data?</p>	<p>A process will be designed and clearly communicated to enable this procedure to take place securely.</p>

Question	Answer
Can you provide case example of someone who would benefit from transferring from the 1995 to the 2008 Scheme.	The issue of providing scenarios was discussed as part of the communications exercise, however, as this is a personal Choice it was decided that this could possibly be misleading, therefore scenarios will not be provided.
Will the employer know if an employee has transferred to the 2008 Scheme?	Yes, we are currently evaluating what management information employers will receive on this issue.
Will everyone receive a Choice Statement from Jan-Mar, not just the over 50's?	No, we are only dealing with the over 50's with the exception of GP Practices and Direction Bodies who will receive all their statements irrespective of age.
Will the powerpoint presentation be available on the website?	We now have all your personal email addresses and a copy of the presentation will be emailed to you.
Do NHS Pensions intend to send annual benefit statements to all members and how will these be distributed?	It is the intention that once the Choice Exercise is completed in 2012 annual benefit statements will be issued to all Scheme members. However, a decision has not been made on how this will be done. Further consideration will have to be given to how best to issue these.
Will non members receive information about the new 2008 Scheme to encourage them to join it?	All new employees should be provided with Scheme information on taking up their employment and this should be supplied by the person's NHS employer.

Question	Answer
If the membership information is incorrect on the statement do they still only have 4 months to decide which option to take?	No. Once a revised statement is issued then the decision period goes back to 3 months.
Can you tell us what will be in the Choice Statements?	The Choice Statement will contain details of the latest pensionable service and pay information we have been provided with. Based upon this data we will then calculate the anticipated pensions in the 1995 and 2008 Sections at age 60 and 65.
How will we know if there is still data to correct or gaps to fill?	The data cleanse team will be in contact with all employers where known errors exist.
What ESR fields will you use for distribution addresses?	It is anticipated that the same data that is shown on ESR Payslips will be shown on the Choice statement to assist distribution.
What is data collection date for each tranche?	There is no set date. You must continue to work with the data cleanse team as prior to issuing Choice statements data extracts will be taken at various stages.
Where a shared payroll provider is used will packs go the employer or payroll provider.	Over the next few weeks we will be collecting the name of the Choice contact and subject to any requests Choice statements will be sent to the nominated Choice co-ordinator.
How long should we be keeping ex-employee pension records for?	NHS Pensions does not stipulate a set period but however for best practice National Audit Office say at least 7 years.

Question	Answer
Will we get all our statements at the same time, or are they sent out in alphabetical order over a couple of months?	It is anticipated that employers using ESR will receive Choice Statements in ESR Payslip order Non-ESR will receive them alphabetically.
Who is responsible for GP's statements and packs and when will they be issued?	Following a request from the British Medical Association Type 1 Medical Practitioners, (Partners) and Type 2 Medical Practitioners, (Assistants, employed GPs salaried or fee based, Solo only earners, GP Returners will start to receive their Choice packs from September. In the main the Choice packs will be sent to the PCT/LHB and will be sent out in SHA order.
Will everyone entitled to, receive a pack? You seem to imply they will not, initially. How many will not receive one?	One of the lessons learned from the Early Adopters is that there will be a number of Scheme members who may not received a Choice statement with the initial batch. These cases may require manual intervention however until full testing has been carried out it is not possible to say what percentage will fall into this category.
How will we deal with someone (in say 20 years) who said they were given bad advice and seeks legal action?	We will deal with these on a case by case basis and they will have the right to appeal through the Internal Dispute Resolution procedures and ultimately to the Pensions Ombudsman.
What about people who have left the NHS but not yet 60, how will they be contacted for Choice?	To be entitled to receive a Choice Statement the member must be a member of the 1995 Section on 1 October 2009. Therefore, they would only get Choice if they returned within 5 years of leaving the NHS.
Is this a one-off Choice?	Yes and they have up to 4 months to make a decision. If they do not make a choice they will remain in the 1995 Section.

Question	Answer
Can Special Class employees be easily identified?	This is something NHS Pensions will be responsible for.
Will people who do not return the option form receive written confirmation that they will remain in the 1995 Section?	No.
If you retire from the 1995 Section can you then join the 2008 Section as a top up?	Only those who retired after 1 April 2008 and before 1 October 2009 may join the 2008 Section, and only after 2 years from the date of their retirement.
What will happen if a person is in hospital and unable to make their decision in the timeline?	Every case will be looked at individually and if there is a genuine reason why they have been unable to make their decision within the timeline then their individual timeline will be extended accordingly.
If a member makes a decision to move to the 2008 Section and then changes their mind within the 4 month period can this be done?	No.
Will Pensions Officers be able to provide estimates for the 2008 Scheme?	It is anticipated that POL will allow Employers to provide such estimates in the future for 2008 Section members.
In the 2008 Section if you have no spouse or partner can your children receive a pension?	No, but they can be nominated to receive a death gratuity if there is one payable.
In the 2008 Section what is the reckonable service at age 65?	The maximum amount of membership a member can have in either the 1995 or the 2008 Sections is 45 years by the age of 65.

Question	Answer
Who will identify when a person reaches maximum membership?	NHS Pensions will identify such members in advance of them reaching maximum membership so that they can be offered Choice.
If a person has retired will they receive Choice?	No
Will different information be available for General Practitioners?	General Practitioners will receive a similar style of statement to other members. However, they will also receive an additional Choice Guide which has been specifically designed for them.
Will Choice statements show how much a member can draw down?	No.
How can employers alert staff to the Choice Exercise?	Make sure you make use of all the publicity material available prior to statements being received in your area. If you need more information then contact the employer helpline who will organise these for you.
Where can Trade Union Representatives obtain further Union packs?	All HR Leads were sent additional packs to be circulated to TU officials, further packs can be obtained through the employer helpline.
If we have Choice statement which need to be returned to NHS Pensions because they have left our employment what information will be needed to accompany the returned statement?	Should you receive a pack that needs to be returned please confirm the member's last known address or forwarding address if known.

Question	Answer
If an employer cannot give advice – why is there a graph showing red/green indicators (better or worse for them to switch) included in the statement?	This is not financial advice the information contained in that particular section of the Choice Guide is information and merely serves as an indicator only in certain circumstances. This section also points to other aspects of the Scheme members should consider.
Do employers receive a copy of the statements issued to their employee?	No.
Do employers get a list of the statements produced?	Yes. You will receive an advance electronic copy 2-3 days before your statements arrive. Then a paper copy will be included with all your statements.
Whole-time Equivalent information – is there any guidance available which explains how part-time employments are converted to WTE?	There is a specific factsheet on the main section of the NHS Pensions website covering membership, including how to calculate this for members working part-time. This can be found at: www.nhsbsa.nhs.uk/pensions under employer toolkit and then Manage Scheme Membership.
Has the modeller been corrected for employees over 60? Previously when used for staff over 60 there were errors?	We are not aware of any issues, however if there is a specific problem identified please log this with the Choice Helpline for Employers.
What is the position of individuals who have just retired/made redundant/early retirement on organisational change?	If the member was due to retire on or after 1 October 2009 a procedure was in place to provide them with a Choice Statement so they could make their personal choice.

Question	Answer
What is the cut off date for data cleansing?	There is no cut off date, please continue to work with the team based in Fleetwood this will enable us to have the most up to date information available to produce the statements.
Will NHS Pensions be contacting employers detailing information held on employees to help ensure that data is correct, ahead of statements being produced?	Yes, the team at Fleetwood will contact you if there are errors on the information held to ensure that your data is as clean as possible prior to issue of your statements.
If a member retires from the 1995 Section early can they continue to pay contributions until they reach normal retirement age?	No, the only members who could potentially pay into the 1995 Section after taking retirement benefits would be those who receive ill health retirement benefits and who return to pensionable employment before the age of 50.
What management information will be available to employers?	This is currently under consideration.
<p>If a member of the 95 Section is buying added years to retire with 40/80ths at age 65 years will they:</p> <ul style="list-style-type: none"> • Still receive a personalised statement? • Will it show benefits at only 65 years or 60 years as well? 	Yes, all eligible members will receive a Choice Statement even if they are buying added years. In the majority of cases Choice Statements will show a comparison at age 60 and 65 unless the member has already attained the age of 60 or 65. In such cases they will receive a Statement showing a comparison of their current benefits and again at the next significant birthday for example either age 65 or 70.
The pension scheme is attractive as a recruitment incentive – is there going to be a leaflet telling prospective member's of the benefits?	There is already a great deal of information about the benefits provided by the NHS Pension Scheme available through the website. However, a brief overview of the Scheme can be found in the Scheme Guide.

Question	Answer
Member sessions were held in Yeovil and Cornwall, will there be member sessions in other areas?	No we do not envisage that there will be member sessions in other parts of the country. However consideration is being given to how we might possibly help employers in delivering such information to members.
Added Benefits - What happens if you are currently buying extra years? Will this be shown on the statement and can you stop the contract if you want to change to the 2008 Section.	Yes added years purchased will be included in the calculations. However, should a member transfer to the 2008 Section the contract to buy added years will be stopped and a proportional credit will be given.
How do you go about registering your partner for your benefits.	Information and a form is available on the website.
Have the early adopter sites seen an increase in 'step down' and is there an expected percentage uptake of step down?	Too early to say at present however, the situation is being monitored
In the 1995 Section can you provide information regarding voluntary protection of pay?	Further information on this can be found on the Employers section of the main NHS Pensions website.
What is the time limit for members who do not reply?	All members will have 4 months from the date of their statement to reply. If they have not replied by this date then they will automatically stay in the 1995 Section.
Will information on lump sum on transfer be included in the statements?	Yes, details of the minimum and maximum lump sum will be provided as part of the Choice Statement.
Do survivor pensions apply to unmarried partners?	Yes. Information is available in the Scheme Guide and on the website.

Question	Answer
Will the Choice DVD be available to view on line?	The DVD is already available on the NHS Pensions website.
What is the nature of the engagement being undertaken to Chief Execs in respect of the Choice exercise and are the links with HR/Payroll community going to be improved?	All NHS Chief Executives have signed up to the delivery of Choice. However wherever possible NHS Pensions will be engaging with both Chief Executives and HR Directors in order to alert them of the Choice Executives and to ensure that they aware of their roles and responsibilities during the Exercise.
How will you deal with pension statement queries from members?	There is a specific Choice helpline facility available to members with queries.
What will happen to staff who are undergoing a TUPE exercise during the Choice Exercise?	A specific factsheet is available for those members going through a TUPE transfer during Choice as they will be eligible to opt-into Choice early should they wish. Such members should be provided with a copy of the Choice Guide, Choice DVD, Choice Opt-in form and the factsheet.
As employers can't give advice where do employees go to get transparent and unbiased advice to make an informed choice?	The literature supplied as part of the Choice Exercise and available through the NHS Pensions website should be sufficient to enable members make an informed decision. However, should members wish to discuss any issues relating to their future pension benefits we would suggest they contact the Pensions Advisory Service. Whilst they too will not be able to advise a member on what they should do, they will however advise them about pensions in general.

Question	Answer
<p>If a member returns their Choice Opt-in form and the NHS Pensions do not receive it or it is lost – what will the member need to do to ‘prove’ they had sent their form in?</p>	<p>Where members return their Choice option form they should expect to receive an acknowledgement from NHS Pensions confirming their decision. Therefore, if they do not receive an acknowledgement within a reasonable period of time they should contact NHS Pensions. NHS Pensions will issue a duplicate form for the member to complete if necessary.</p>
<p>Can a member change their mind after making a decision?</p>	<p>No.</p>
<p>Do GP Partners get a statement?</p>	<p>Following a request from the British Medical Association Medical Practitioners, (Partners) will start to receive their Choice packs from September regardless of age. Choice packs will be issued in SHA order. In the main the Choice packs will be sent via the PCT/LHB. However, Non-GP Providers, Partners without any Practitioner membership at all will receive their Choice packs as part of the main distribution and their Choice packs will be sent to the PCT/LHB/Trust or whoever there employer is recorded as being.</p>
<p>AVCs – will AVC information be on statements?</p>	<p>No. Money Purchase AVS will not be shown on the Choice Statement.</p>
<p>If a member is retiring imminently is there a procedure in place to provide them with a choice options statement in time for them to make an appropriate choice?</p>	<p>Yes, there are procedures in place for retirees. Details of the procedures to be followed are shown on the NHS Pensions website.</p>

Question	Answer
If a member who is over 60 transfers to the 2008 Section is the 1/60 pension calculated over the whole of their membership?	Yes all of their membership will be regarded as being membership of the 2008 Section and as such the pension payable will be based upon 60ths. However, the mandatory lump sum payable will be based upon membership up to 31 March 2008 and will be based upon 80ths.
Can you please clarify what is classed as a large employer?	We are currently analysing records however we are currently regarding a large employers as having 1500 Scheme members or more.
Are nominated beneficiaries detailed on the individual statements? If now, how does the member check/update these details?	No, named beneficiaries will not be shown. This is something you will need to check separately.
If a member has previous service in Scotland, would these be added automatically to their service.	No, they would have had to have requested a transfer in of this service within 12 months of starting their employment in NHS England and Wales.
If a member of staff is terminally ill will they be able to get a Choice statement immediately?	Yes, there are procedures in place to provide statements in these circumstances.
Will a member who has left the Scheme get a Choice statement?	No. To receive Choice you need to be in NHS employment?
Have NHS Pensions got sufficient resources to deal with potential queries from members getting Choice statements for the first time?	NHS Pensions have recruited and trained a team and have put robust processes and procedures in place to deal with potential queries arising from the issue of Choice statements.

Question	Answer
<p>There is a lot of support for the larger NHS employers organisation, what support will be offered to the smaller employers?</p>	<p>There will be a team of people in your area before and during the issue of the statements, all Choice leads will be issued with names and contact details. If you are a small employer and need assistance you can contact any member of the team to assist you.</p>
<p>How do you register your partner to receive a partner pension, how are these kept up to date and is this linked to marital status?</p>	<p>Members should use form PN1 which is available to be downloaded from the Forms section of the NHS Pensions website.</p>
<p>If a member of staff has not replied will employers be notified that they will remain in the 1995 Section?</p>	<p>The records for members who transfer to the 2008 Section will be annotated accordingly.</p>
<p>Will you be advertising procedures for retirees of the 2008 Section?</p>	<p>Information for Employers has already been provided in the Choice Newsletters and in the factsheet shown on the NHS Pensions website. Such procedures will also be shown in the Choice toolkit for employers currently being developed.</p>
<p>What is a Choice critical error?</p>	<p>This would be something that might affect a person's decision in some way, for example a period on missing Scheme membership or a large discrepancy with their pay perhaps.</p>
<p>If the communication material going to be in languages other than English?</p>	<p>No, all communications will be produced in English only.</p>
<p>Will NHS Pensions pick up the costs of postage for the packs because for the larger employers it is going to be expensive?</p>	<p>Costs for distribution have been included in the overall costs for delivering the Choice statements.</p>

Question	Answer
If an employer knows there are problems with their data what should they do?	Employers should contact the team at Fleetwood and they will work with you to resolve any issues.
How do we get addresses for members who are employed by Dental providers who don't tell us their home addresses?	Dental Practitioners will have their statements issued via the Dental Practice Board.
What happens if individuals miss the deadline?	If a member does not return form indicating their Choice then it will be assumed they are staying in the 1995 Section. However, if there is a genuine reason ie ill-health, out of country etc then each case will be considered on an individual basis with a view to extending the deadline.
What times will the helpdesk be available?	The helpdesk will be open from 0800 – 1800 daily Monday to Friday.
What is happening with bank workers? Are they to be included with permanent employees?	This will depend upon the member and whether they have more than one employment. For members with more than one part –time employment, the Choice statement and pack will be sent to the person's main employer. For any bank staff, again the Choice statement and pack will be sent to wherever that person has a main employment or if the member works purely on the bank, they will be sent to wherever they have an open employment. It is therefore important that employers close down any open employments where bank staff has not worked within a three month period.

Question	Answer
Will there be a 'cooling off' period like with other financial decisions?	No, members however will be given up to four months in which to make their decision.
Are the over 50's statements calculated as at 31 March 2009 and will both calculations use the same figure?	NHS Pensions will use the latest pay details available and the same information will be used in the calculation of the 1995 and 2008 benefits.
Will NHS employers including Direction bodies be informed if someone moves to the 2008 section?	Yes
Where should employers send their Choice contact details to?	Such information should be sent to: comms@nhspa.gov.uk
Members who are transferred into the NHS Pension Scheme after 1 April 2008 under TUPE will they automatically become members of the 2008 Section?	Not necessarily. This will depend upon the Scheme they are transferring from and the normal retirement age they had whilst contributing to that previous scheme.
Members who have been off sick for more than 12 months and are in a no pay situation, will they still be entitled to Choice.	No, only members who apply for Ill Health retirement would receive a Choice whilst on no pay sick, any other member would have to wait until they returned to work to receive their Choice.
Will the Scheme membership shown on the Choice Statement for those members working part-time be scaled down?	Yes
Will there be any information available for those who are not in the Scheme?	NHS Pensions is currently looking at developing communication for all staff which will help explain the valuable benefits that can be gained from contributing to the NHS Pension Scheme.

Question	Answer
Will Direction members receive a different DVD to other members?	No
Who should a member contact if they are concerned about the information contained in their Choice Statement?	They should contact the Choice Helpline for members on 0300 123 1601
Why is it not possible for a member to nominate a child to receive a survivor pension?	There is no provision within the regulations governing the NHS Pension Scheme to make such payments.
Under the 1995 Section, if a member retires at the age of 55, do they have to take their pension or could they defer taking it until age 60? Would it be possible to take the lump sum at age 55 and leave the pension for payment at age 60?	Providing they do not apply for the payment of their pension benefits until age 60 then we would not pay them. The member would simply be regarded as having left the Scheme. With regards to taking the lump sum at age 55 and leaving the pension for payment at age 60, this is not possible, the Scheme regulations do not allow for this.

Question	Answer
<p>How will people who have left the NHS be informed about Choice?</p>	<p>Members who simply leave before Choice arrives in their area will not be offered Choice before leaving. They would however be offered Choice if they return the NHS Pension Scheme within 5 years of leaving. They should also have received the Payslip Leaflet announcing Choice.</p> <p>Members who have retired have been informed about the Choice Exercise in their annual newsletter.</p>
<p>How are part years dealt with i.e. would someone with 15 years 7 months have their membership rounded up to 16 years?</p>	<p>No, all membership is converted into the total number of days when calculating NHS pension benefits.</p>
<p>If a member leaves the 1995 Section and doesn't return to NHS employment for several years will they be able to re-join the 1995 Section?</p>	<p>Members who leave the NHS Pension Scheme and who return within 5 years will be able to re-join the 1995 Section. Those who return after a break of more than 5 years will have to join the 2008 Section.</p>
<p>If I stay in the 1995 Section do I have to take my NHS pension at age 60 or could I retire at age 65?</p>	<p>No, providing you are in NHS employment and have access to the NHS Pension Scheme you can continue in Scheme membership up to a maximum age of 75 (65 for members who have special class status) and do not exceed the maximum membership limit of 45 years.</p>
<p>Does special class status not apply in the 2008 Section?</p>	<p>No, special class status does not exist in the 2008 Section. Therefore members of the 1995 Section who decide to transfer to the 2008 Section would lose this status.</p>

Question	Answer
Are employers responsible for retaining the 10 year reckonable pay details?	No, NHS Pensions will collate this information from the annual updates or leaving details it receives from employers. Employers however may wish to retain their own records as they would do normally.
Members who leave the Scheme before Choice arrives in their area and rejoin the Scheme within 5 years of leaving, who will offer them Choice?	NHS Pensions will pick such members up when we receive their joiner details.
How do members nominate a partner to receive a survivor pension?	You will need to complete form PN1 which can be obtained from the NHS website.
How much does it cost to provide the minimum lump sum?	The cost is based on the same principle of increasing a member's lump sum. £1 = £12 lump sum.
For those members who transfer from the 1995 Section what pay is used to calculate the mandatory lump sum in the 2008 Section?	This is the same pay used in calculating the member's pension. However the mandatory lump sum payable from the 2008 Section is only based upon Scheme membership up to 31 March 2008.
Can members increase their pension by reducing the amount of lump sum they receive on retirement?	No.
In the 2008 Section, if someone draws down part of their pension under the new flexibilities, will this be reduced?	Any pension taken before the normal retirement age will be adjusted to take account of it being paid early.

Question	Answer
Will Pensions On Line (POL) eventually show which section a member is contributing to.	Yes this is what we are working to.
Can members of the 1995 Section still apply to take their NHS Pension benefits from the age of 50?	Yes providing that is their normal minimum retirement age. Members should remember however that if they take their pension benefits under the Voluntary Early Retirement arrangements the benefits payable will be reduced to take account of them being paid early. Members who joined the NHS Pension Scheme on or after 6 April 2006 for the first time or return with a previous leaving date of on or before 1 April 2000 will have a normal minimum retirement age of 55.
Will previously preserved benefits in the 1995 Section be included in the calculations?	Yes all benefits in the 1995 section will be taken account of.
Are GP benefits still based on a career average?	Yes.
Up to what point in time should employers continue to update data?	Up to the point we take the data cut from the records to start production of the Choice Statements, which will be approx 2 weeks before your expected delivery.
Where an employer is unable to locate membership records for someone questioning their Scheme membership, what will happen?	NHS Pensions will work with the member to try and resolve the issue. The member will be asked for copies of payslips or P60's and if necessary we contact Inland Revenue.

Question	Answer
<p>Could NHS provide a DVD for new members?</p>	<p>We are currently looking at developing something for new members which provides basic information about pensions and the benefits of contributing to the NHS Pension Scheme. This is likely to be in the form of a Podcast as apposed to a DVD. In the meantime some employers have been showing new members the Choice DVD as this explains some of benefits available through both sections of the Scheme.</p>
<p>As a Direction Employer how will I know what a new employee's normal retirement age is?</p>	<p>This is something NHS Pensions or with the employee if you have not previously been informed.</p>
<p>Do the modellers take account of part time working?</p>	<p>Yes</p>
<p>Which Data cleanse errors are critical?</p>	<p>Any errors or omissions which would prevent NHS Pensions from calculating a member's pension benefits such as missing part time hours worked, overlapping membership or missing pay details etc.</p>
<p>Will previously preserved membership be included in my Choice Statement if I have since re-joined the 1995 Section?</p>	<p>Yes.</p>