

## **NHS Jobs and ESR integration – Create a job listing**

This document is for users of NHS Jobs and ESR integration.

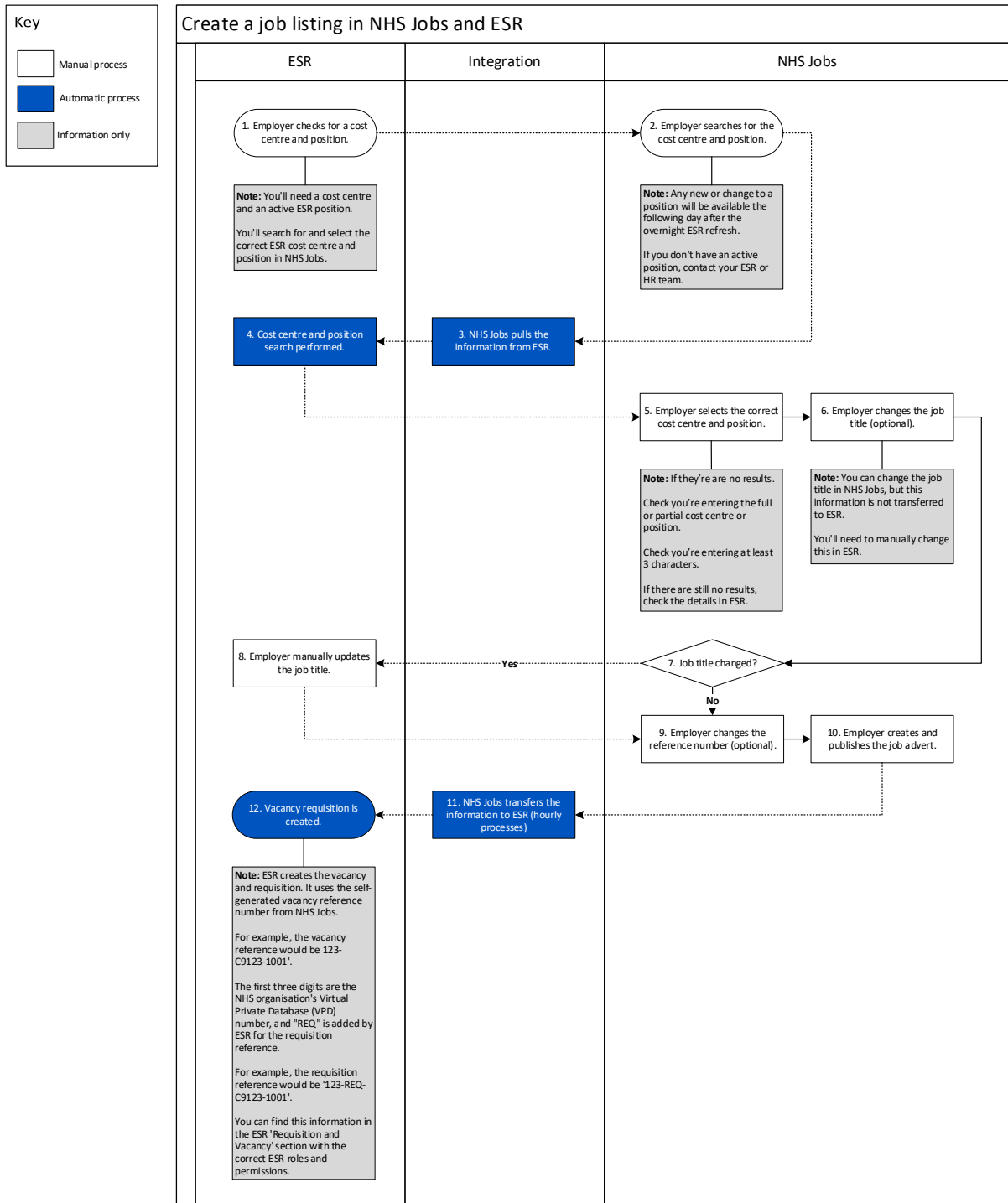
It includes a process flow for creating a job listing and has links to help and guidance.

## Contents

<a href="#"><u>NHS Jobs and ESR integration – Create a job listing</u></a> .....	<a href="#"><u>1</u></a>
<a href="#"><u>Process flow</u></a> .....	<a href="#"><u>3</u></a>
<a href="#"><u>Help and guidance</u></a> .....	<a href="#"><u>4</u></a>

## Process flow

This page shows the process flow for creating a job listing in NHS Jobs and ESR.



## Help and guidance

This page gives you access to help and guidance.

Knowledge base: <https://faq.nhsbsa.nhs.uk/knowledgebase>

Help and support for employers: [www.nhsbsa.nhs.uk/new-nhs-jobs-service/help-and-support-employers](http://www.nhsbsa.nhs.uk/new-nhs-jobs-service/help-and-support-employers)

Help and support for applicants: [www.nhsbsa.nhs.uk/new-nhs-jobs-service/help-and-support-applicants](http://www.nhsbsa.nhs.uk/new-nhs-jobs-service/help-and-support-applicants)

YouTube channel: [www.youtube.com/nhsjobsservice](http://www.youtube.com/nhsjobsservice)

You've reached the end of this document.