

# NHS Clinical Evaluation Team Clinical Pathway



**Scope and Definition**

**Scope: Every Day Healthcare consumables.**  
Products found in the majority of wards, clinics, health centres, treatment rooms and district nurses' bags.  
Products generally used across a multitude of healthcare settings.

**Objective:**  
To support efforts to deliver to the NHS high quality everyday Healthcare products, through an independent pathway undertaken for the NHS, by the NHS.

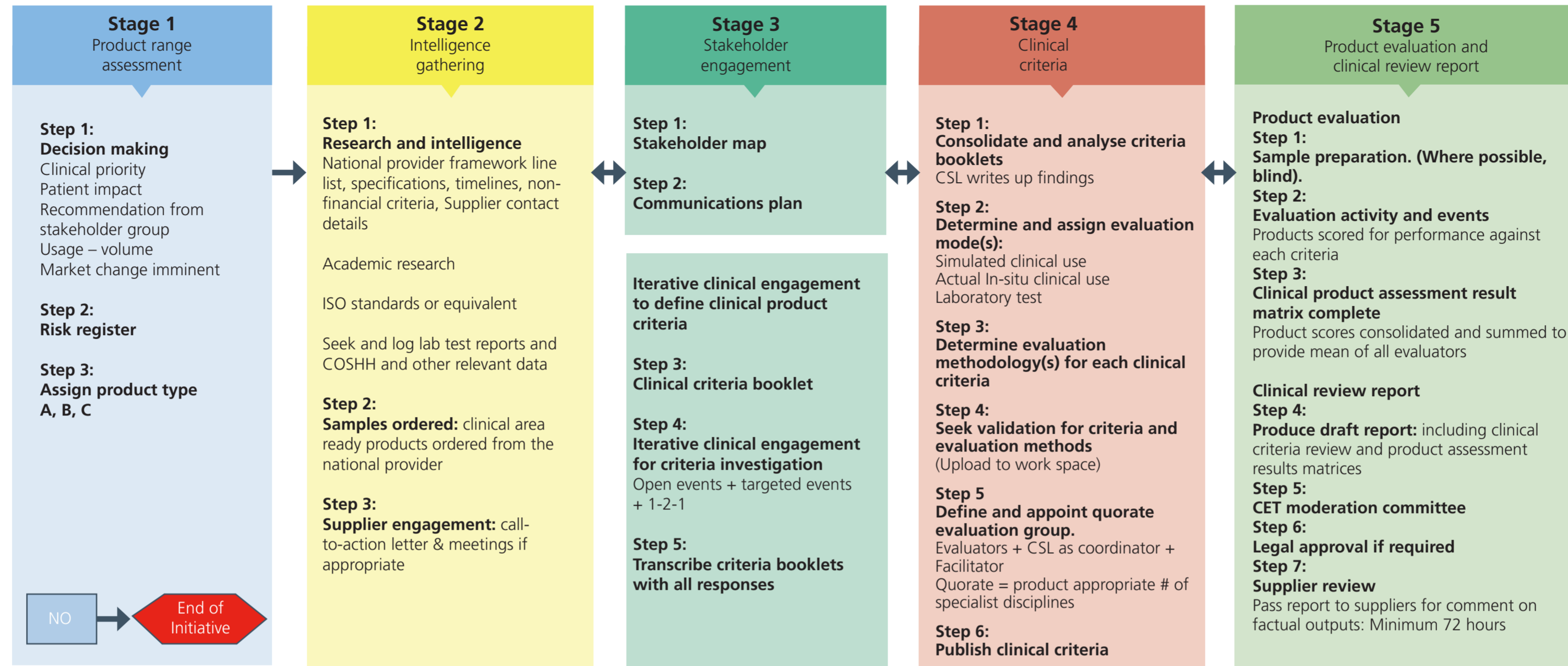
To make it as easy as possible for NHS staff to pick the right product for safe, effective patient care.

**Direction from:**

- Clinical Evaluation Team
- Clinical Reference Board
- NHSBSA
- NHS national bodies
- NHS organisations
- NHS Customer Boards

**Considerations:**

- Everyday healthcare consumable product
- Standardisation
- Technological innovations
- Resilience and sustainability concerns.
- Clinical best practice



Stage gate governance				
Audit trail (output available) Peer review CRB approval	Peer review	Audit trail (output published) Peer review Critical Friends validation CRB review	Audit trail (output published) Peer review & critique Critical Friends validation	Audit trail (output published) CET collective decision Critical Friends validation CRB approval

Stage gate interdependencies (timelines predicated on SLAs achieved from all interdependents)				
NHS SC, Clinical Reference Board, NHSBSA, NHS National bodies, NHS organisations, NHS customer boards	NHSBSA Legal NHS SC Technical team	NHS organisations Nominated clinicians	Nominated clinicians Trusts Technical team / organisations	Nominated clinicians Legal Product suppliers NHSBSA (incl Comms team) + NHS SC

**Launch**

**Output:**  
Clinical Review reports to include:  
Product assessment results matrix  
Products scored, but not recommended  
Specialist use functions high-lighted  
Future recommendations where appropriate

**Approval:**  
Clinical Reference Board

**Publication:**  
Upload to National CET Website

**Action:**  
Inform NHS

Handover to NHSBSA for range hierarchy and national catalogue search criteria

**Clinical Evaluation Timelines**

Our clinical specialists will normally undertake two projects at the same time. The time frame for stages 1-4 will remain the same but additional time will be needed in Stage 5 if both projects reach this stage at the same time.

Stage 1	+	Stage 2	+	Stage 3	+	Stage 4	+	Stage 5	Total Duration*
1 week		4 weeks		6 weeks		5 weeks		8 weeks	24 weeks
<b>Type A product groups</b>									
1 week		4 weeks		9 weeks		5 weeks		9 weeks	28 weeks
<b>Type B product groups</b>									
1 week		4 weeks		13 weeks		5 weeks		10 weeks	33 weeks
<b>Type C product groups</b>									

\*If two projects reach stage five at the same time for a clinical specialist then an additional seven weeks duration will be needed for the second project report to be published