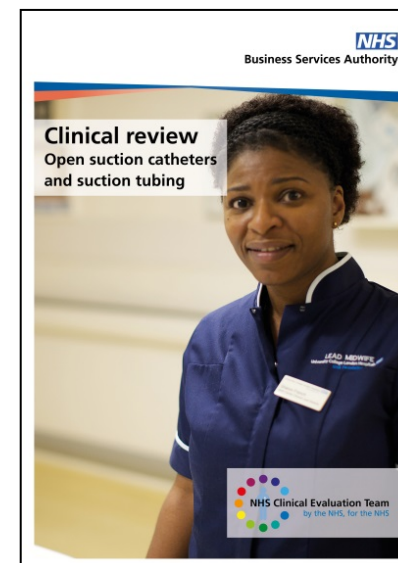
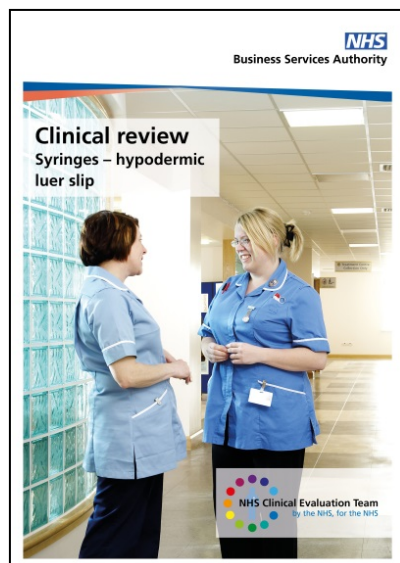


Quality, safety and value

NHS Clinical Evaluation Team's first four reports



The role of the NHS Clinical Evaluation Team

An independent national team with robust procedures, which will support and inform national initiatives helping the delivery of quality clinical products to frontline staff.

- Clinicians have never been asked to evaluate on a national level before
- What is currently on the catalogue of our national provider may not have been clinically evaluated
- This work will develop national clinical criteria of what we need from each product
- This work will give clinical information to clinicians for the first time to inform their choice

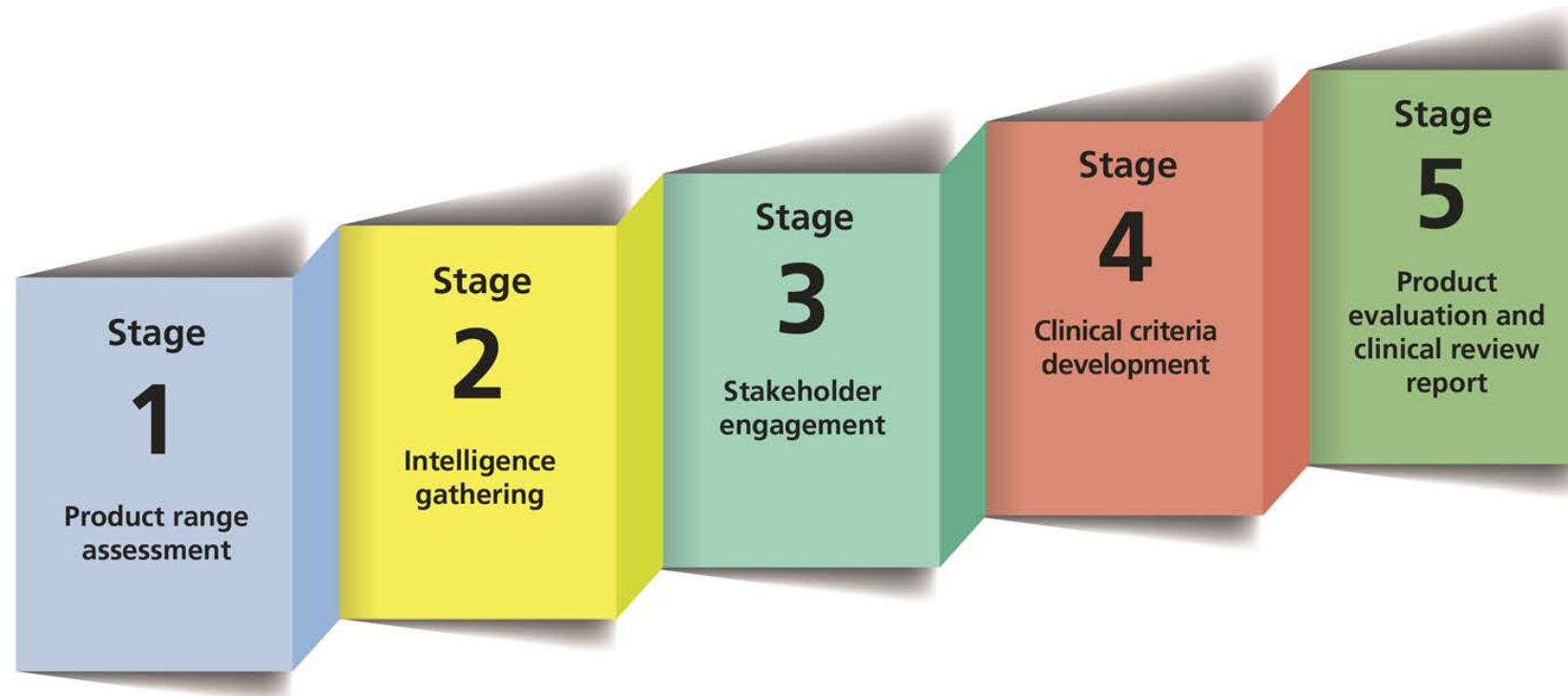
Everyday healthcare consumables

Everyday healthcare consumables are products that are found in the majority of wards, clinics, health centres, treatment rooms and district nurses' bags across the NHS.



Patient Impact
Staff Impact
High Volume



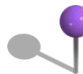
NHS Clinical Evaluation Team Clinical Pathway

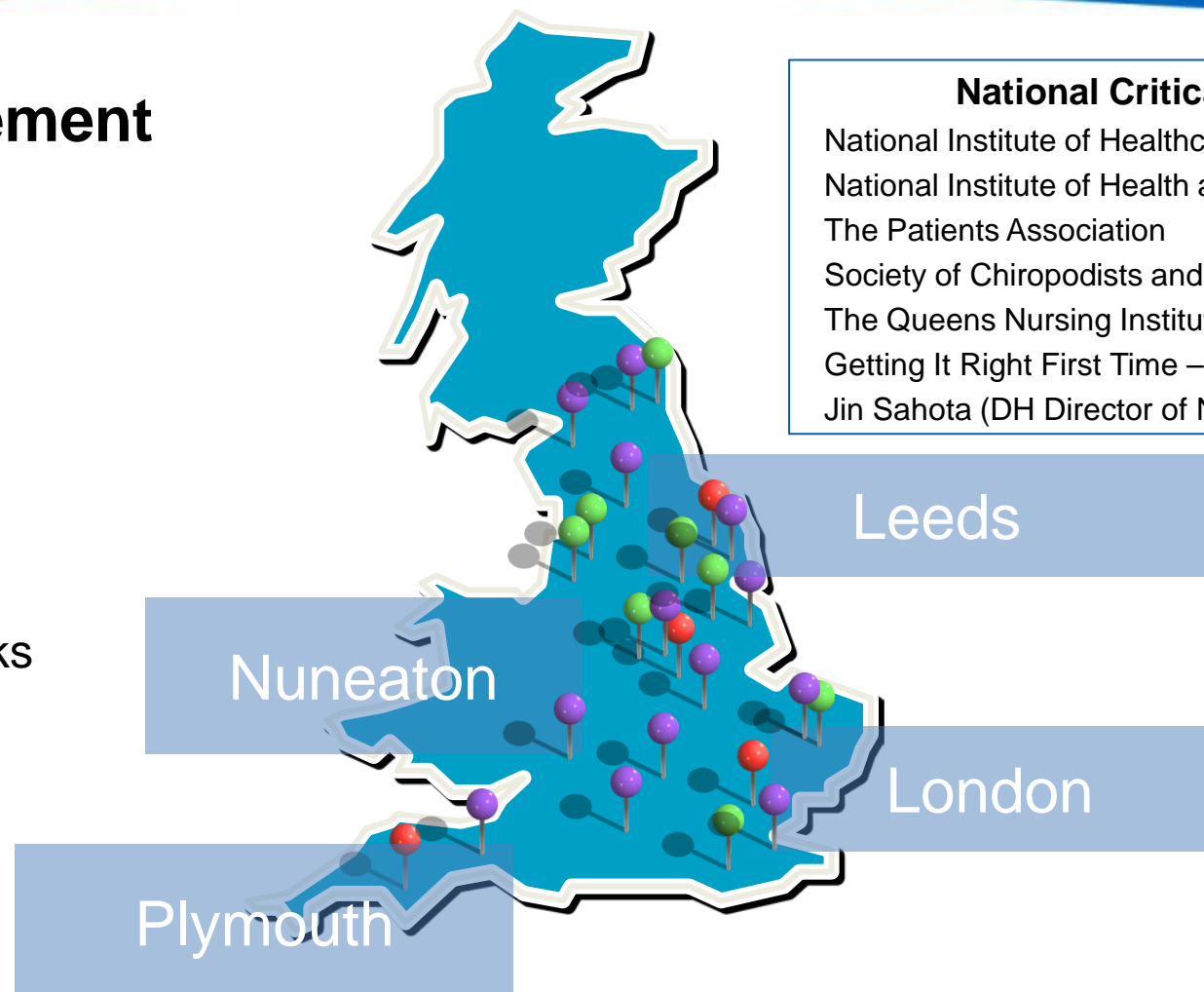


Selecting the right product?



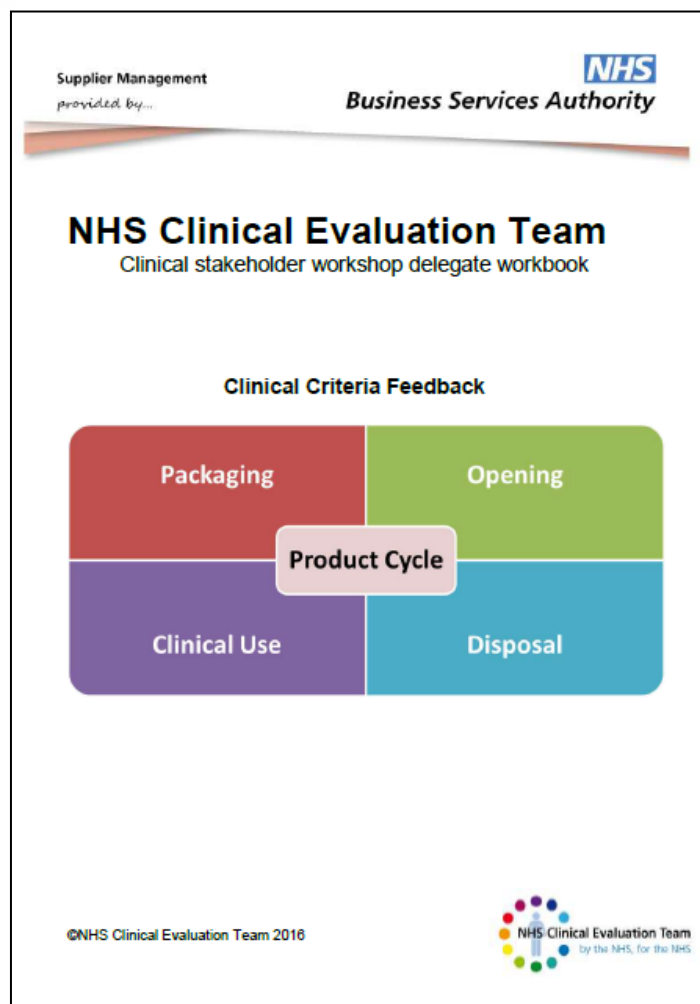
Clinical engagement

-  Engagement days
-  Focused visits
-  Clinical events, forums & networks



National Critical Friends

National Institute of Healthcare Research
 National Institute of Health and Clinical Excellence
 The Patients Association
 Society of Chiropractors and Podiatrists
 The Queens Nursing Institute
 Getting It Right First Time – (DH)
 Jin Sahota (DH Director of NHS Supply Chain)



Clinical criteria workbook...

... translates to
clinical criteria...

CLINICAL CRITERIA – Syringe Hypodermic Luer Slip
The product type, size, lot number and expiry date is simple for staff to identify on the external packaging
The external packaging is of a robust construction for storage and simple to access for removal of products
The product type, size, lot number and expiry date is simple to identify on the syringe wrapper
The syringe wrapper should give a clear indication of how to open
The syringe can be opened quickly whilst protecting any sterility requirements
The volume numbers and measured graduation lines are clear, visible and easy to read for clinical staff
There is space to apply a drug label in certain clinical situations without compromising the visibility of graduations - This will only be a criteria for 2ml/5ml/10ml/20ml sizes in luer slip
The design should enable staff to use the syringe with a one-handed technique
The syringe should easily draw up and dispense a range of solutions commonly used in clinical practice
The syringe should accept a range of hypodermic, blunt and filter drawing up needles
The plunger should not easily be accidentally removed when drawing up a solution
The handling and use of the syringe should not be affected by wearing of medical gloves
A range of hypodermic, filter & blunt drawing up needles that are secured to a luer slip syringe can be removed safely using a sharps container needle remover lid.



... which translates to the ability to clinically assess offered product for quality and suitability in clinical practice.

Star rating system



Exceeds criteria




Meets criteria



Partially meets criteria



Did not meet criteria

BLUNT DRAWING UP DEVICES - WITH AND WITHOUT FILTER		Supplier	MEDICINA LIMITED	Supplier	MEDICINA LIMITED
					
NHS CET Product Assessment Cycle	Assessment criteria	Brand	Medicina Ltd	Brand	Medicina Ltd
		MPC	BN02	MPC	BN01
		NPC	FTR1769	NPC	FTR1770
		Description	18g, 40mm drawing up device With 5µm filter	Description	18g, 40mm drawing up device Without filter
		Unit of issue	100	Unit of issue	100
		Score		Score	
Packaging	It is easy to identify necessary detail on shelved / stored item in the clinical setting when in outer carton	★★★★ (2.0)		★★★★ (2.0)	
	It is easy to identify necessary detail on shelved / stored item in the clinical setting when stored separately to the outer carton in the clinical area.	★★★★ (2.2)		★★★★ (2.0)	
Opening and preparing for clinical use	It must be easy to identify an unfiltered from a filtered drawing up device	★★★★ (2.6)		★★★★ (2.4)	
	The device can easily be prepared for safe clinical use	★★★★ (1.8)		★★★★ (2.2)	
	The safety blunt drawing up or mixing device should safely attach to a range of Luer tapered devices (6% taper) of both a lock and no-lock design.	★★★★ (2.0)		★★★★ (2.0)	
Effective clinical use	In clinical use it must be easy and timely to draw up a non-viscous fluid/diluent	★★★★ (2.2)		★★★★ (2.2)	
	In clinical use it must be easy and timely to draw up a viscous fluid/diluent	★★★★ (2.0)		★★★★ (2.0)	
	The device must pierce bung of ampoule with appropriate effort	★★★★ (2.2)		★★★★ (2.2)	
Safe Disposal	The safety blunt drawing up and/or mixing device can be safely disposed of in appropriate sharps container as per local guidance or policy.	★★★★ (2.0)		★★★★ (2.0)	

BLUNT DRAWING UP DEVICES - WITH FILTER		Supplier	BECTON DICKINSON	VYGON	B BRAUN MEDICAL	MEDICINA	SMITHS MEDICAL	MEDTRONIC (COVIDIEN UK)
		Brand	BD Blunt Filter	SOL-M	Sol-Care	Medicina	Jelco	Monoject
		MPC	305211	110022F	110022F	BN02	BN1815F	8881305109
		NPC	FTR436	FTR1923	FTR1986	FTR1769	FTR1930	FTR1828
NHS CET Product Assessment Cycle	Assessment criteria	Description	18g, 40mm drawing up device With 5µm filter	18g, 40mm drawing up device With 5µm filter	18g, 40mm drawing up device With 5µm filter	18g, 40mm drawing up device With 5µm filter	18g, 40mm drawing up device With 5µm filter	18g, 80mm drawing up device With 5µm filter
		Unit of issue	100	100	100	100	100	100
Packaging	It is easy to identify necessary detail on shelved / stored item in the clinical setting when in outer carton	Scores	★★★☆☆ (2.2)	★★★☆☆ (1.8)	★★★☆☆ (2.0)	★★★☆☆ (2.0)	★★★☆☆ (2.0)	★★★☆☆ (1.8)
	It is easy to identify necessary detail on shelved / stored item in the clinical setting when stored separately to the outer carton in the clinical area.	Scores	★★★☆☆ (2.2)	★★★☆☆ (2.0)	★★★☆☆ (2.0)	★★★☆☆ (2.2)	★★★☆☆ (2.0)	★★★☆☆ (2.0)
Opening and preparing for clinical use	It must be easy to identify an unfiltered from a filtered drawing up device	Scores	★★★★★ (3.0)	★★★★☆ (2.6)	★★★☆☆ (2.0)	★★★★☆ (2.6)	★★★★☆ (2.6)	★★★★☆ (2.4)
	The device can easily be prepared for safe clinical use	Scores	★★★☆☆ (2.0)	★★★☆☆ (2.2)	★★★☆☆ (2.0)	★★★☆☆ (1.8)	★★★☆☆ (1.8)	★★★☆☆ (2.0)
	The safety blunt drawing up or mixing device should safely attach to a range of Luer tapered devices (6% taper) of both a lock and no-lock design.	Scores	★★★☆☆ (2.0)	★★★☆☆ (2.0)	★★★★★ (2.8)	★★★☆☆ (2.0)	★★★☆☆ (2.0)	★★★☆☆ (1.8)
Effective clinical use	In clinical use it must be easy and timely to draw up a non-viscous fluid/diluent	Scores	★★★☆☆ (2.2)	★★★☆☆ (2.2)	★★★☆☆ (1.8)	★★★☆☆ (2.2)	★★★☆☆ (2.2)	★★★☆☆ (2.2)
	In clinical use it must be easy and timely to draw up a viscous fluid/diluent	Scores	★★★☆☆ (1.8)	★★★☆☆ (1.8)	★★★☆☆ (2.0)	★★★☆☆ (2.0)	★★★☆☆ (2.0)	★★★☆☆ (1.0)
	The device must pierce bung of ampoule with appropriate effort	Scores	★★★☆☆ (2.2)	★★★☆☆ (1.6)	★★★☆☆ (2.2)	★★★☆☆ (2.2)	★★★☆☆ (2.2)	★★★☆☆ (1.8)
Safe Disposal	The safety blunt drawing up and/or mixing device can be safely disposed of in appropriate sharps container as per local guidance or policy.	Scores	★★★☆☆ (2.0)	★★★☆☆ (1.6)	★★★☆☆ (1.8)	★★★☆☆ (2.0)	★★★☆☆ (2.0)	★★★☆☆ (2.0)

Clinical quality evaluation comparator tools

How we started

An independent national team with robust procedures, which will support and inform national initiatives helping the delivery of quality clinical products to frontline staff.

- Clinicians have never been asked to evaluate on a national level before
- What is currently on the catalogue of our national provider may not have been clinically evaluated
- This work will develop national clinical criteria of what we need from each product
- This work will give clinical information to clinicians for the first time to inform their choice

And where we are now

An independent national team with robust procedures, which will support and inform national initiatives helping the delivery of quality clinical products to frontline staff.

- What is currently on the catalogue of our national provider is now starting to be **clinically evaluated at a national level**
- This work **has developed national clinical criteria** of what we need from each product. Finally clinicians can have what they need and only what they need
- This work gives **independent** clinical information to clinicians for the first time to inform their choice
- This work will support the **continued delivery of high quality, good value products to frontline clinicians**

First four clinical review reports now available

