

NHS Pensions - Which Scheme access application form do I need to complete?

Depending on various factors you may be granted Scheme access and then allocated an Employing Authority (EA) code through one of the following Scheme access routes:

- As an Independent Provider
- As classic APMS becoming an Employing Authority (EA)
- As a Direction/New Fair Deal employer.

The Employing Authority code that has been assigned to you identifies which type of Scheme access has been granted.

If your organisation holds any of the contracts listed below, please follow the chart in order to establish which application form you need to complete.

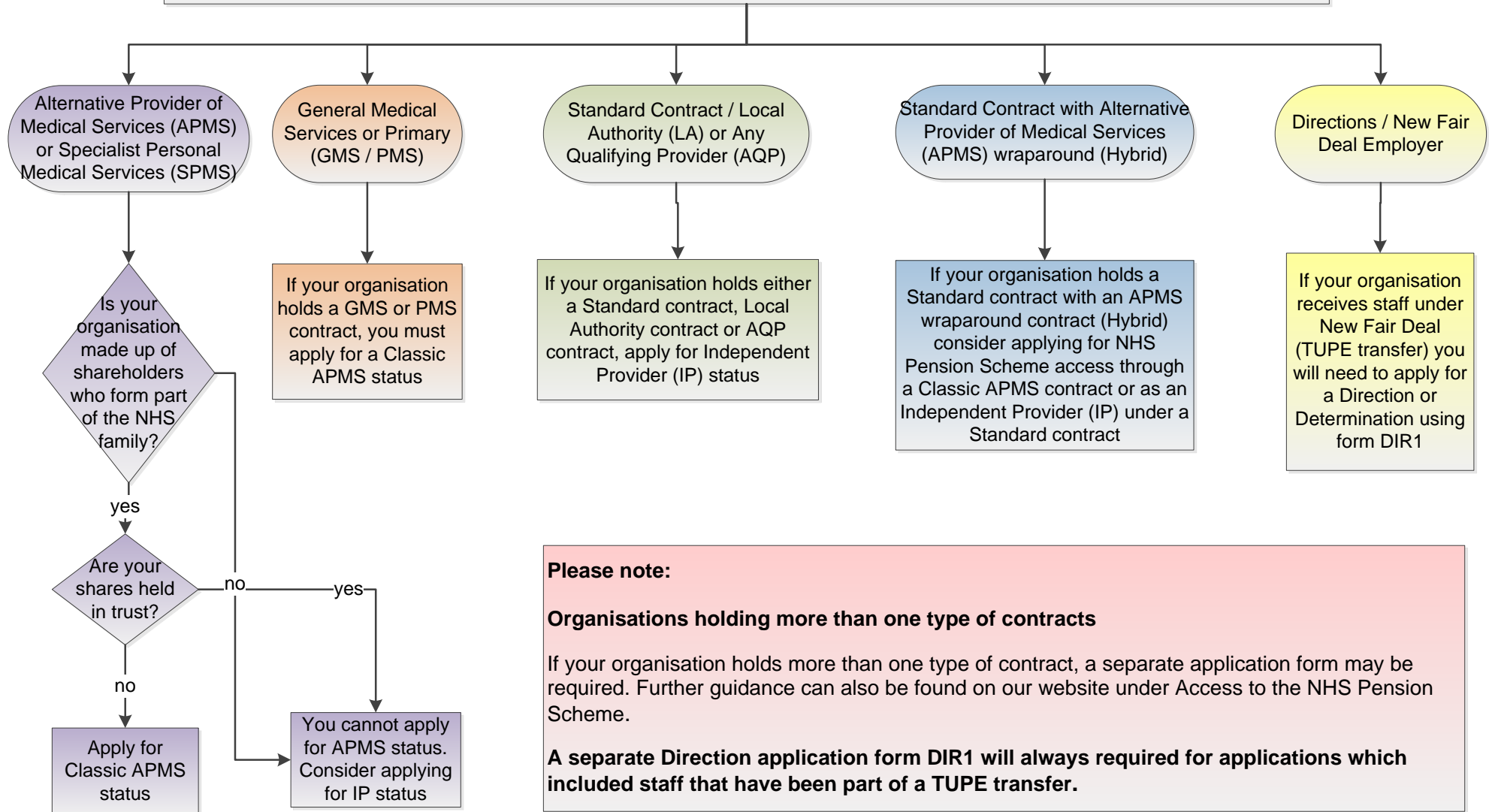
What kind of contract do you have?

- Alternative Provider of Medical Services (APMS)
- Specialist Personal Medical Services (SPMS)
- General Medical Services (GMS)
- Primary Medical Services (PMS)
- Standard Contract
- Local Authority Contract
- Any Qualifying Provider (AQP)
- Standard with APMS wraparound (Hybrid).

Use the table below to determine the correct application.

The APMS Employing Authority Code (EA Code) request form and application forms can be found on our website under NHS Pension Scheme Access.

Which type of contract do you have?



Please note:

Organisations holding more than one type of contracts

If your organisation holds more than one type of contract, a separate application form may be required. Further guidance can also be found on our website under Access to the NHS Pension Scheme.

A separate Direction application form DIR1 will always required for applications which included staff that have been part of a TUPE transfer.