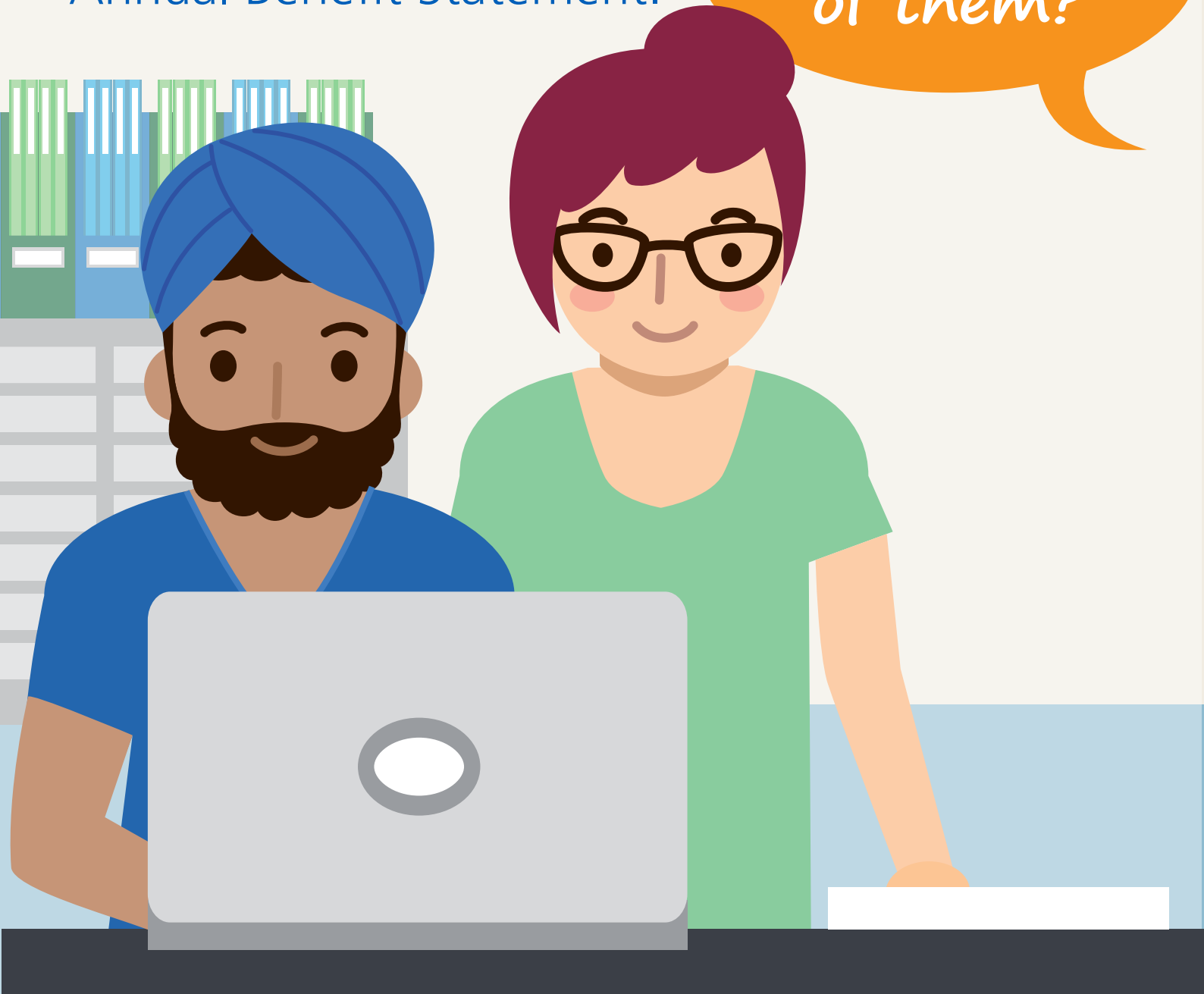


Annual Benefit Statements

Last year over **462,237**
people viewed their
Annual Benefit Statement.



Were you one
of them?



For more information about Annual Benefit Statements and how to access them visit www.nhsbsa.nhs.uk/total-reward-statements

Statements are available if you were in NHS employment on or before 31 March 2017.
Pension information is based on data provided by your employer.