

Student Services news



Keeping us connected

Student Services

NHS Student Bursaries

Social Work Bursaries

Education Support Grant

Learning Support Fund

Welcome to Student Services News

Contents

Introduction

4

Operational update

5

Latest from the
LSF Project Team

6

The policies are here!

6

2016/17 Annual Report

7

Meet the team

8

Social media
channels

10

Bursary Fraud – in the
media

11

Reporting concerns
of fraud

12

Your dedicated
helplines

13

Student Services

NHS Student Bursaries

Social Work Bursaries

Education Support Grant

Learning Support Fund

If you're from a university, college or assessment centre that works with students who are eligible for NHS or social work bursaries, please subscribe to Bursary News.

Email us at nhsbsa.studentservices@nhs.net with your full contact details and we'll add you to our distribution list.

Introduction

from Louisa Ruman, Student Services Manager



Welcome to the July edition of Student Service News, where I am pleased to report that good progress has been made during the last quarter.

On Monday 10 July the policies regarding the NHS Bursary Scheme, Financial Support for Transitional Arrangements and Financial Support for the Learning Support Fund were all published.

I am also pleased to confirm that the **Social Work Bursary Guidance** was published on Thursday 20 July, which details your capping allocations. If you have any concerns or questions regarding your allocated number(s) please contact educationandtraining@dh.gsi.gov.uk who will be able to assist further. More information about the policies can be found on page 6.

We are in the final stages of confirming dates and venues for our next stakeholder events, which are likely to take place in October. We are planning an event in London and one in the North. Once these details are confirmed we'll be sending out 'save the dates' so keep an eye on your inbox!

The service remains in a strong position, however there are still approximately 13,000 continuing students that have either still not made an application to us or not provided all the required supporting evidence. The students concerned have been sent a number of reminders and we would really appreciate any messages of encouragement you could send to your students.

Thank you for your continued ongoing support and I hope you have an enjoyable summer.

Louisa Ruman
Student Services Manager

Operational update

We are pleased to report that business as usual activities for continuing, medical and dental students and social work bursary students is good.

All our work streams are progressing well and we are working within our Key Performance Indicators (KPIs).

We ask that all universities continue to encourage their students to apply for their bursaries and send the required supporting evidence as soon as possible. We are making every effort to process continuing students' applications in time before the new work streams (introduced following the funding reforms) begin in September.

“ We ask that all universities continue to encourage their students to apply for their bursaries and send the required supporting evidence as soon as possible. ”



Latest from the LSF Project Team

The Learning Support Fund (LSF) Project Team has been working hard over the last few months. They have made great progress on the LSF Application System (LSFAS) which will allow students to apply or access LSF specific forms from one online platform.

The big news is that the Financial Support policies have now been approved by the Department of Health. You can read more about this in the article below.

The policies are here!

The Department of Health has now approved the policies for the 2017/18 regarding NHS Bursary continuing and Medical and Dental students as well as those who fall under the new funding arrangements starting in August 2017.

We are pleased to announce that the following have now been released and are all available to download from our [website](#).

NHS Student Bursary:

- [NHS Bursary Scheme New Rules \(Sixth Edition\) 2017/18](#) – For students who started their course after September 2012.
- [NHS Financial Support for Health Students – Transitional Arrangements 2017-18](#) – For students starting on Postgraduate, Dental Hygiene, Dental Therapy or some capped part-time courses on or after 1 August 2017.

Learning Support Fund:

- [NHS Financial Support for Health Students – Learning Support Fund 2017/18](#)

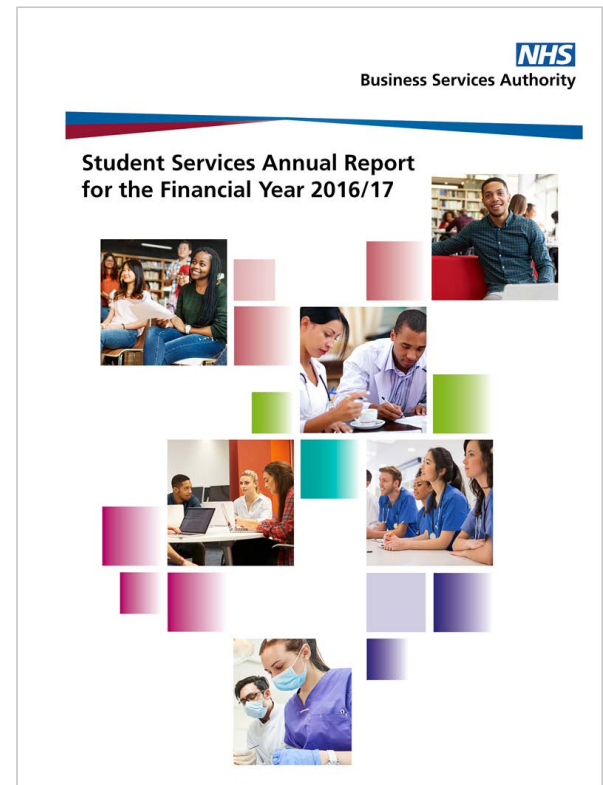
Social Work Bursary:

- [Social Work Bursary Policy 2017 – Information for HEIs and Students](#)



The Student Services annual report for 2016/17 has been published and is available to download from our [website](#).

This provides an overview of our performance with details of all expenditure and transactions for NHS Student Bursaries, Social Work Bursaries and the Education Support Grant throughout the 2016/17 financial year.



Meet the Team

Name of Team: Team 2 and the Quality Team

Where are you based: Hesketh House, Fleetwood

Team 2 and the Quality Team work across the various work streams within Student Services. They undertake quality checks and administration of:

- Practice Placement Expenses (PPE)
- Disabled Students Allowances (DSA)
- DSA Integra
- Change of circumstances
- Childcare Allowance (CCA)
- Boss applications
- General correspondence

The team is currently in the process of multi skilling their members so that they can assist across all areas of the business as required, this will ensure they continue to provide high quality customer service.

They are a friendly bunch and endeavour to support our students, the future of the NHS. An interesting fact about the team is that whenever somebody goes on holiday we have to bring home to the team a souvenir of the place you have visited. I can confirm the team has some very interesting pieces!

Hayley Prescott – Team Manager



“ The team is currently in the process of multi skilling their members so that they can assist across all areas of the business as required. ”

Who is in the team:

Josephine Connelly
Adam Ponsford
Felix Allen
Peter Bamber
Beth Haworth
Chris Peacock
Courtney Barnes
Carly Bagnall
Noel Allen
Louise Strachan
Hannah McMurtrie
Lillias Wallace
Sarah Tongue

Sam Simpson
Jacqui Boardman
Daniel McGauley
Lisa Levett
Nikki Hearse
Anthony Kendall
Michael Deigan
Jennie Figg
Charlotte Beasor
Janaine Parker
Sarah Callighan
Melek Ozaslan

Social media channels

For those of you who follow us on social media, you may have noticed we have expanded! We now have dedicated Twitter and Facebook accounts for NHS Bursaries and Social Work Bursaries. Each account provides useful information and tips for students to get the most out of their bursary and help with the application process. If you're not already, why not give us a follow and spread the word!

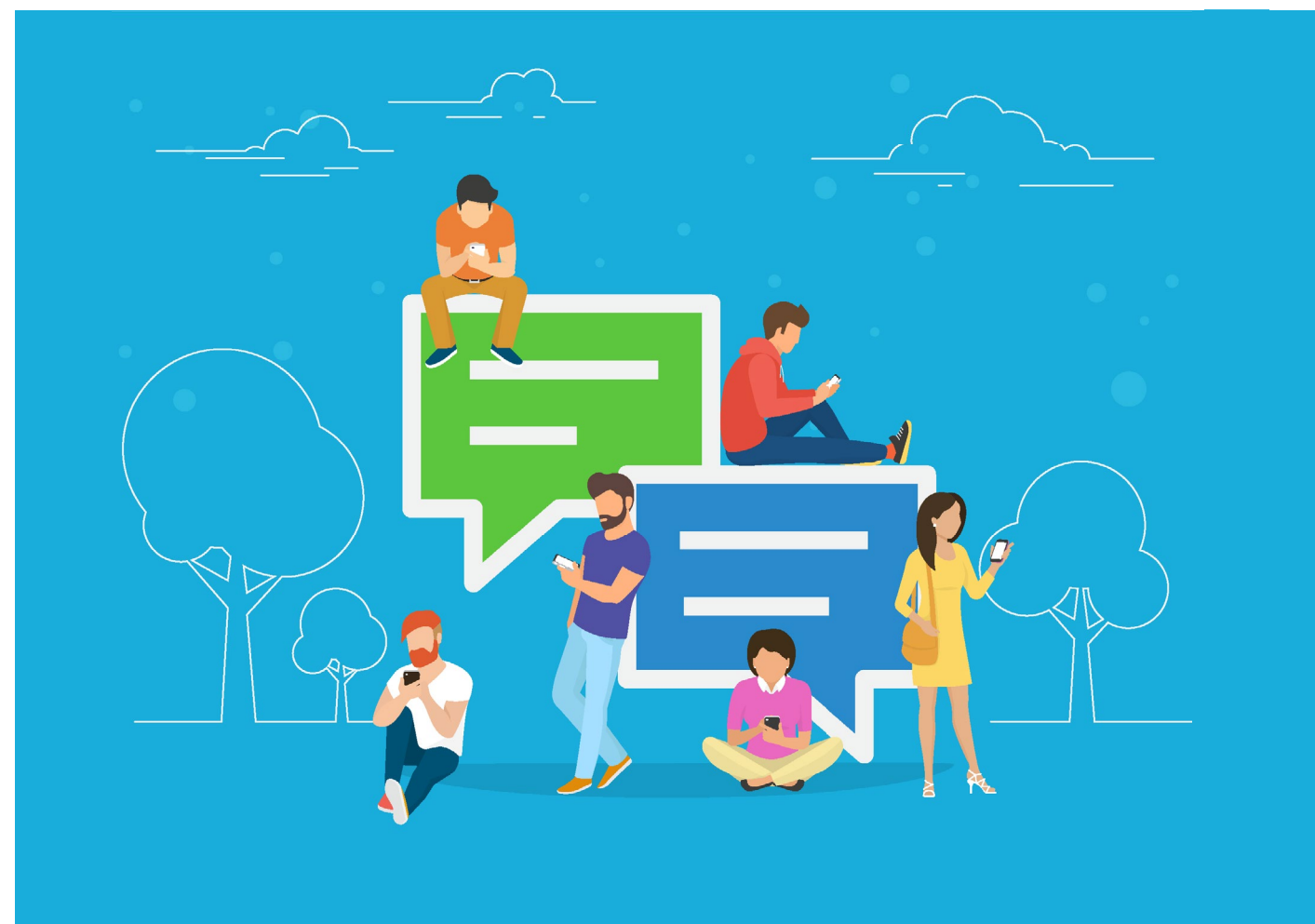


@NHSBSA_Students
@SWB_NHSBSA



/NHS Student Bursaries
/Social Work Bursaries

If there's anything you would like to see us cover on social media please feel free to drop us a line at nhsbsa.studentservices@nhs.net.



Bursary Fraud – in the media

There has been recent media activity regarding a student who was found guilty of committing bursary fraud.

The student made applications to three universities for nursing courses between the years 2001 and 2011 using false identity documents as well as claiming to have two dependent children, who were actually fictional. Upon a request by the UK Borders Agency to check the student's identity documents, NHS Protect were alerted to the claims.

The student was sentenced to 13 months imprisonment which was suspended for two years after a hearing at Guildford Crown Court. It has been estimated the amount falsely claimed is enough to train four new nurses!

This resulted in a successful prosecution however it also highlights the importance of being alert to potential fraudulent claims. If you have any worries or concerns about applications, you can report these, anonymously, by calling 0800 028 40 60 or via an [online form](#).

Reporting concerns of fraud

Do you have any suspicions of bursary fraud happening in your university?

Suspensions can be reported in confidence to trained personnel through the NHS Protect Fraud Corruption Reporting Line (FCRL).

.....

Telephone:

0800 028 40 60

(Monday to Friday 8am to 6pm)

.....

Email: nhsfraud@nhsprotect.gsi.gov.uk
(anytime)

Online: www.reportnhsfraud.nhs.uk
(anytime)



Stop Fraud

Your dedicated helplines



If you have a query and can't find the answer on **Ask Us**, our online self-help enquiry system, you can call our advisors on:

NHS Student Bursaries

 **0300 330 1372**

Social Work Bursaries

 **0300 330 1342**