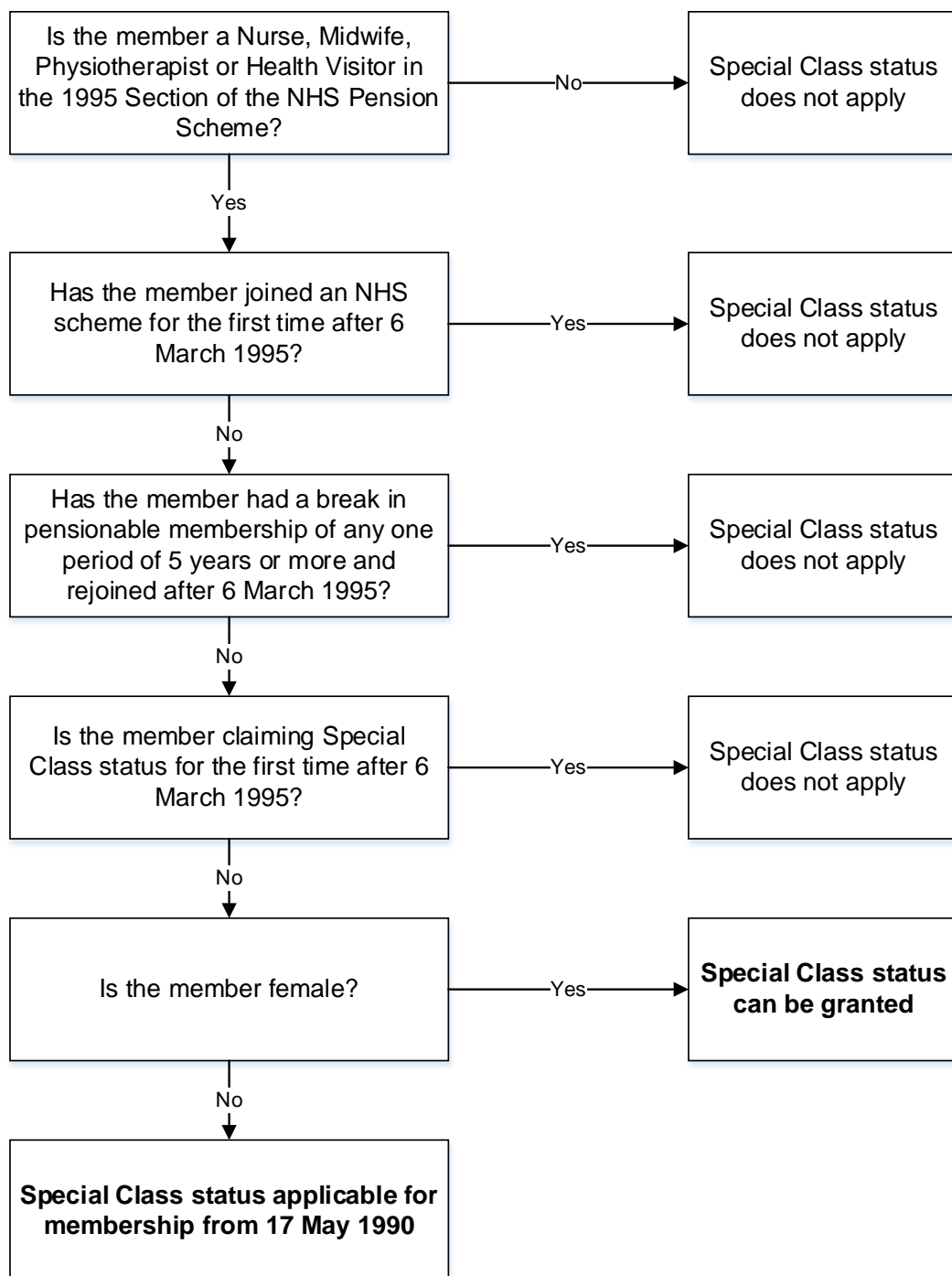


## NHS Pensions – Special Class decision tree (1995 Section)



**Note:** If retention of Special Class status for a managerial grade is being investigated, please instead refer to the Special Class factsheet for specific guidance.

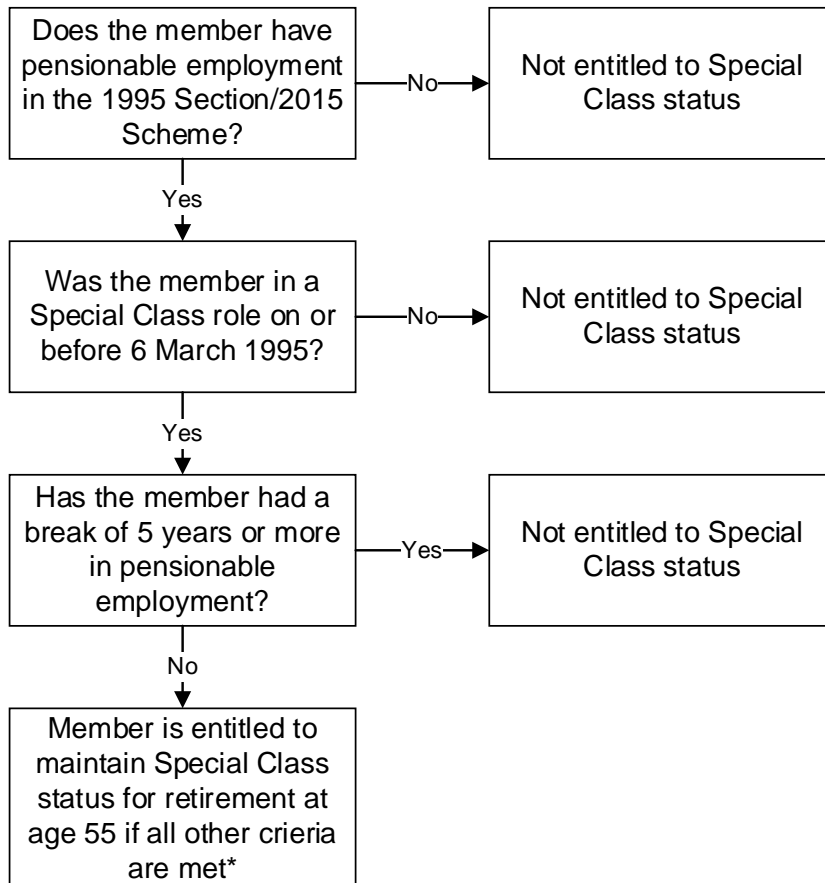
Members joining after 6 March 1995 for the first time, who have membership in NHS Scotland or Northern Ireland, Special Class status may apply. This membership does not need to be transferred in.

## Special Class status – Transitional members

For members of the 2008 Section or a member joining the 2015 Scheme for the first time, Special Class status does not apply.

Members with preserved rights in the 1995 Section who moved to the 2015 Scheme on 1 April 2015 or transition at a later date may retain the right to retire at age 55 for their 1995 Section benefits where a final salary link is maintained.

Therefore, Special Class status must continue to be investigated and recorded during 2015 Scheme membership to establish retirement eligibility in the 1995 Section.



\*The criteria for retirement from age 55 are that:

- The member must be active at age 55 with Special Class status, and
- Has spent the last five years employment in a role with Special Class status.

### If the criteria are met

1995 Section benefits will be paid in full at age 55. 2015 Scheme benefits may also be paid at age 55 but will be actuarially reduced.

Members claiming 1995 Section benefits cannot rejoin the 2015 Scheme.