

Hints & Tips

Information Services

Prescription Services



Welcome to the June 2018
issue of Hints & Tips!

If you've got a hint or tip that you would like us to
write about in a future edition, please email it to:
nhsbsa.communicationsteam@nhs.net

Issue
31

Contents

- 05** ePACT no longer available from 8 June
- 06** Access to ePACT2 – user obligations
- 06** Our services and GDPR
- 07** Respiratory Dashboard
- 08** EPS Dashboard
- 08** Continuous development of dashboards
- 09** Unlicensed Products
- 09** Sodium Valproate
- 09** Data release calendar

Subscribe to Hints & Tips

If you would like to receive Hints & Tips by email, please let us know and we'll add you to the distribution list. Please email: nhsbsa.communicationsteam@nhs.net and put 'Subscribe to Hints & Tips – Information Services' in your subject line Include the following:

- Name
- Job role (e.g. prescribing advisor, medicines manager)
- Organisation name

Foreword

Welcome to the June 2018 issue of Hints & Tips, your regular newsletter full of updates and information.

If there are any topics you'd like us to cover in future issues please let us know at nhsbsa.communicationsteam@nhs.net

ePACT no longer available from 8 June

As you will know from previous communications, ePACT will be decommissioned on 8 June 2018. After this, you will only be able to access ePACT2 – so you need make sure you have made the transition to the new system before close of business of this date.

If you have not already registered for ePACT2, you can find details on how to get access on NHSBSA website at:
<https://www.nhsbsa.nhs.uk/epact2>

Before you lose access to ePACT, it is important that any tags that you have created and use in ePACT are recreated within ePACT2.

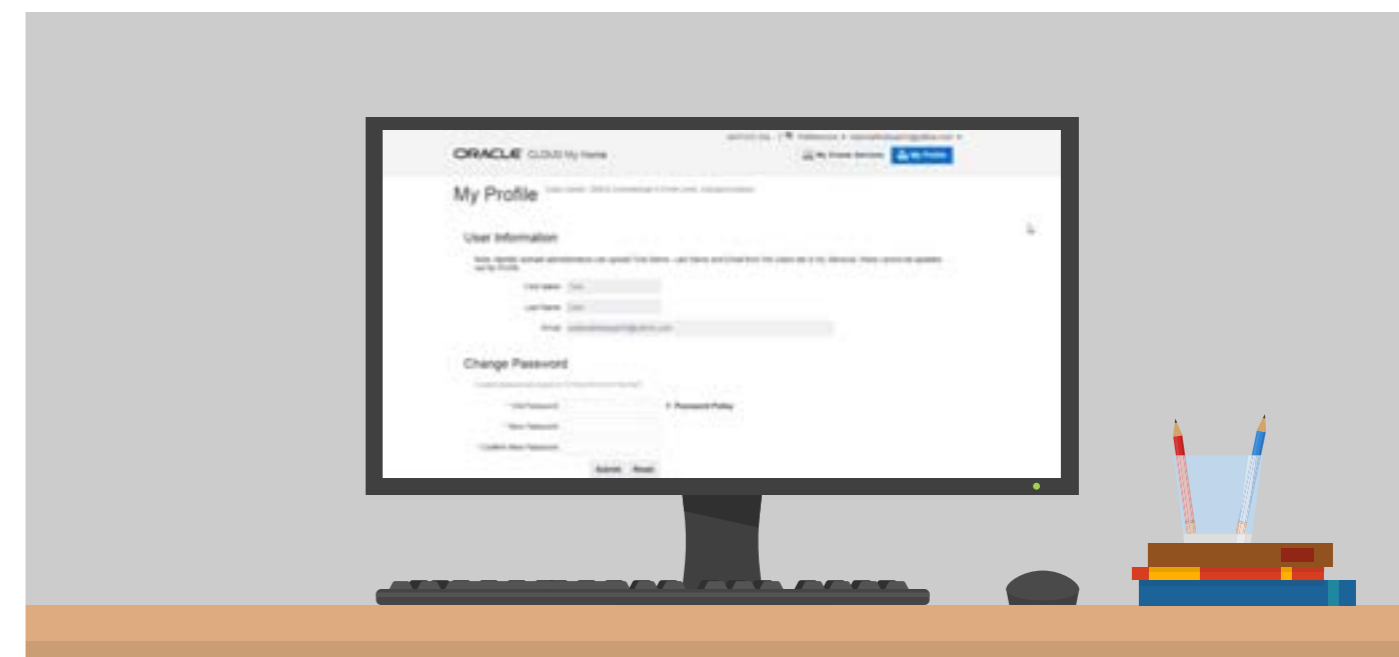
To help you with this process, a user guide and a 'Recreating ePACT Tags within ePACT2' video is available at:

<https://www.nhsbsa.nhs.uk/epact2/epact2-user-guides>.

If you still need help in recreating your reports in ePACT2, details of the training options available to you can be found on NHSBSA website at:

<https://www.nhsbsa.nhs.uk/epact2/epact2-training>

We are eager to make the transition to the new system as smooth as possible so if you have any queries please contact nhsbsa.help@nhs.net where our support team will be happy to help.



Access to ePACT2 – user obligations

Under the terms of the ePACT2 User Agreement (EUA), you are required to notify NHSBSA Information Services if access to ePACT2 is no longer required or if you have moved to a different organisation other than the one under which you have been authorised to view ePACT2 data. This is to allow the update/removal of your profile. If you move to a different organisation you are required to be authorised by that organisation to view ePACT2 data.

The ePACT2 User Agreement (EUA) is available on the NHSBSA website at

<https://www.nhsbsa.nhs.uk/epact2>

To notify the NHSBSA, send an email to nhsbsa.registration@nhs.net giving the following details:

- Full name
- Job role
- Email address
- Organisation name and code
- Whether you want to remove or amend your details

Our services and GDPR

As you will be aware, one of the biggest changes to UK data privacy law took effect on 25 May 2018. The General Data Protection Regulation (GDPR) means you'll have more control over how your data is used.

To reflect these changes and new obligations when registering for our information systems (ePACT2 and the Information Services Portal), the information you provide when you register will be used to manage your access to Information Services systems.

The email address you provide may also be used by the NHSBSA (Information Services) to send service related communications and newsletters relevant to our information systems.

If required, we will also use the email address provided to:

- contact you to complete surveys relating to NHSBSA services and systems
- invite you to take part in research to help improve our services to you.

If you need to update, receive a copy of or delete your registration information, please contact nhsbsa.registration@nhs.net

We will keep your information for 12 months after your account is closed. This is to ensure that all transactions can be fully audited.

We do not disclose this information to third party organisations.

Respiratory Dashboard

A respiratory dashboard has recently been launched in ePACT2.

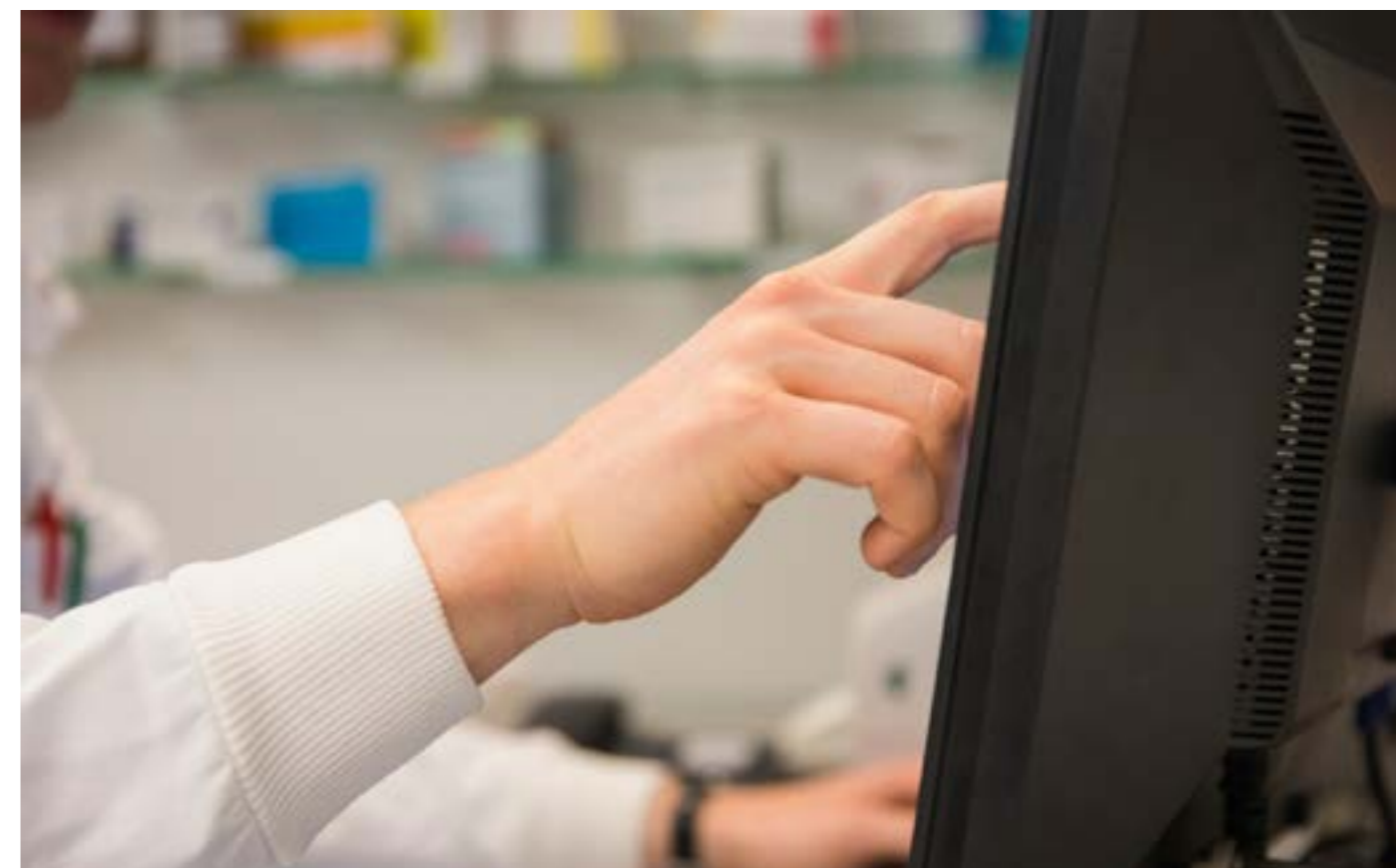
Respiratory prescribing accounts for a significant amount of prescribing spend in the NHS. We know that a large proportion of hospital admissions and A&E attendances are as a result of asthma or COPD exacerbations. In many cases, these admissions and attendances may be avoided by managing patients appropriately in the community and ensuring that their inhaled medicines are prescribed and used optimally.

Given the complexity of prescribing in respiratory care and the plethora of medicines available, a national group of respiratory specialists agreed it would be useful to see the variation in prescribing of respiratory medicines across England. Using data from prescriptions dispensed in primary care,

the aim was to develop a respiratory dashboard to highlight the variation in prescribing across the CCGs in England; allowing CCGs and local health economies to utilise data at a local level to decide if any variation is warranted or unwarranted and if and how they may wish to address this.

Whilst the dashboard may demonstrate patterns in prescribing and spend on those medicines, its intention is to help generate discussion about respiratory prescribing within local health economies, that may potentially help inform any future programmes of work or help to identify areas for improvement in prescribing.

Access to the data will enable primary care clinicians to identify their patients who appear to be most at risk from the harm that can be caused by over or under treatment.



EPS Dashboard

If you would like to know how many items a practice prescribes electronically or which CCG has the highest rate of Electronic Repeat Dispensing (eRD), visit our EPS Dashboard in ePACT2 which includes a range of indicators and geographic breakdowns.

The dashboard allows users to:

- highlight the variation in EPS and eRD prescribing across GP practices and CCGs
- identify the growth opportunity in each area
- help prioritise potential areas of activity
- monitor the impact of initiatives to increase EPS and eRD utilisation
- download data for every GP practice to create their own datasets

If you have already used it, we would like to know what you think of different aspects of the dashboard and if there are any additional indicators that you would find useful.

To provide feedback, you can click the link at the top right of the EPS Dashboard screen in ePACT2 or [click here to complete a short survey](#).

We have also released a public facing EPS Prescribing Dashboard that contains a small subset of the main indicators from the ePACT2 EPS Dashboard but is accessible to those who do not have ePACT2 access. This is available on the [EPS Dashboard page of our website](#).

Continuous development of dashboards

To making the best use of primary care data held by the NHSBSA, we are developing on a number of dashboards to support the NHS England Medicines Value Programme as well as other NHS initiatives.

The dashboards to be developed and their planned release dates are:

- Safer Management of Controlled Drugs – release planned for June/ July 2018
- Mental Health – release planned for August/ September 2018
- Over the Counter Medicines (OTC) – release planned for August/September 2018
- Diabetes – release planned for December 2018



Unlicensed Products

Trazodone 100mg/5ml oral solution sugar free (Creo Pharma Ltd) is now licensed and available.

free (Creo Pharma Ltd) which is licensed (and also available through AAH Pharmaceuticals Ltd and Alliance Healthcare (Distribution) Ltd) should ideally be considered.

Instead of using Trazodone 100mg/5ml oral solution (Special Order) which is **unlicensed**, use of Trazodone 100mg/5ml oral solution **sugar**

Sodium Valproate

The data published on the NHSBSA website relating to the number of female patients of child bearing age that have received prescriptions for Sodium Valproate has been refreshed to include data to March 2018.

The report is updated quarterly and can be found at:

<https://www.nhsbsa.nhs.uk/prescription-data/prescribing-data/sodium-valproate>

Data release calendar

Details of planned dates for the release of reports is available on NHSBSA website under Data release calendar: <https://www.nhsbsa.nhs.uk/prescription-data/data-release-calendar>

Your dedicated **helpline**



For further information please contact the Information Services Support Team:

 **nhsbsa.help@nhs.net**

 **0191 2035050**

For updates and information on ePACT2, why not follow us on Twitter:

 **www.twitter.com/nhsbsa_ePACT2**