

Student Services news



Keeping us connected

Student Services

NHS Student Bursaries

Social Work Bursaries

Education Support Grant

Learning Support Fund

Welcome to Student Services News

Student Services

NHS Student Bursaries

Social Work Bursaries

Education Support Grant

Learning Support Fund

Contents

Introduction

4

Operational update
NHS Student Bursaries

5

Operational update
Social Work Bursaries

6

Operational update
Learning Support
Fund

7

Contact list
reminder

8

Funding update for
Postgraduate, Dental
Therapy/Dental Hygiene
courses

9

NHSBSA celebrates
NHS at 70!

10

British Heart Foundation
charity partner

12

NHSBSA strategy

12

Annual Report
2017/18

13

Just for fun

13

Your dedicated
helplines

15

If you're from a university, college or assessment centre that works with students who are eligible for NHS or social work bursaries or students who may be eligible for the new Learning Support Fund, please sign up to our [contact list](#) to keep up to date with the latest information from Student Services.

 NHS Student Bursaries

 Social Work Bursaries

 /LearningSupportFund

 @NHSBSA_Students

 @SWB_NHSBSA

 @NHSBSA_LSF

Introduction

from Louisa Ruman, Head of Student Services



Welcome to the summer edition of Student Services News. I am pleased to report that as we enter our peak processing months for students reapplying for their NHS Bursary/ Social Work Bursary we are in a strong position with all applications being processed efficiently. Currently a high percentage of student applications have been processed and payments are ready to be made to eligible students in September. Please encourage any remaining students that commenced NHS funded programmes before 1 August 2017, Social Work students and Medical and Dental students to re-apply as soon as possible.

We are nearly at the end of our first academic year of administering the Learning Support Fund and students in receipt of the Child Dependants Allowance will need to reapply for their funding in order for it to continue. Full Learning Support Fund information can be found here www.nhsbsa.nhs.uk/LSF. Please help us to continue to spread the awareness of this support and the benefits it offers. Don't forget, if you'd like LSF on Tour to visit your university please get in touch by emailing nhsbsa.studentservices@nhs.net.

We are currently working with the Department of Health and Social Care to finalise the Scheme rules, a link to them will be sent as soon as they are published.

Have an enjoyable summer.

Louisa Ruman
Head of Student Services

Operational update

NHS Student Bursaries

All NHS students who are eligible to apply for a bursary must make an online application every year through their Bursary Online Support System (BOSS) account. For more information about reapplying and about BOSS, please visit [our website](#).

Your students can find the application window tables on our website. Other useful information and guidance on making a bursary application is also provided on the web pages.

Please encourage your students to apply for an NHS Bursary as soon as possible rather than waiting until close to their application window deadline date. This will help us to assess applications and set up payments in a timely manner ready for the start of the academic year.

The tables below outline our current position for the 2018/19 intake:

Total applications expected	29,891
Total applications approved	17,117
Total applications in process (in the queue)	2,867
Total applications pended (awaiting evidence/further evidence)	5,702
Total number of students not applied	4,456

Operational update

Social Work Bursaries

The bursary application window deadline for autumn term starters is 1 November 2018. Social Work Bursary application forms for 2018/19 academic year can be found on the website.

Please encourage your students to apply for a Social Work Bursary as soon as possible. This will help us to assess applications and set up payments in a timely manner (subject to capping data from universities /awaiting confirmation of enrolment).

The deadline for submitting your capping lists is the 10 August 2018. If you haven't done so, please could you submit these as soon as possible. The tables below outline our current position.

Postgraduate students:	
Total applications expected	3,543
Total applications approved (subject to capping data from universities/awaiting confirmation of enrolment)	1,140
Total applications in process	50
Total number of students not applied	2,353
Undergraduate students:	
Total applications expected	5,204
Total applications approved (subject to capping data from universities/awaiting confirmation of enrolment)	2,415
Total applications in process	111
Total number of students not applied	2,678

Operational update

Learning Support Fund

The Learning Support Fund (LSF) provides supplementary funding to the higher education student loans from the government, for eligible students who are starting pre-registration healthcare courses on or after 1 August 2017. The LSF consists of three allowances; Child Dependants Allowance (CDA), Travel and Dual Accommodation (TDAE) and Exceptional Support Fund (ESF).

Please encourage your students to apply for any of the LSF allowances they may be eligible for. Details of the eligibility criteria and more information about each of the allowances including guidance and how to apply can be found on our website www.nhsbsa.nhs.uk/LSF.

The table below outlines our current position since the launch of LSF on 1 November 2017.

Number of LSF accounts registered					13,247
Number of non loan students					679
Work Stream	Applications Received	Applications Approved	Applications Rejected	Applications On Hand	Applications Pending
CDA Application	5,836	4,150	408	9	1,269
TDAE Application	5,966	4,937	180	122	727
ESF Application	231	133	46	29	23

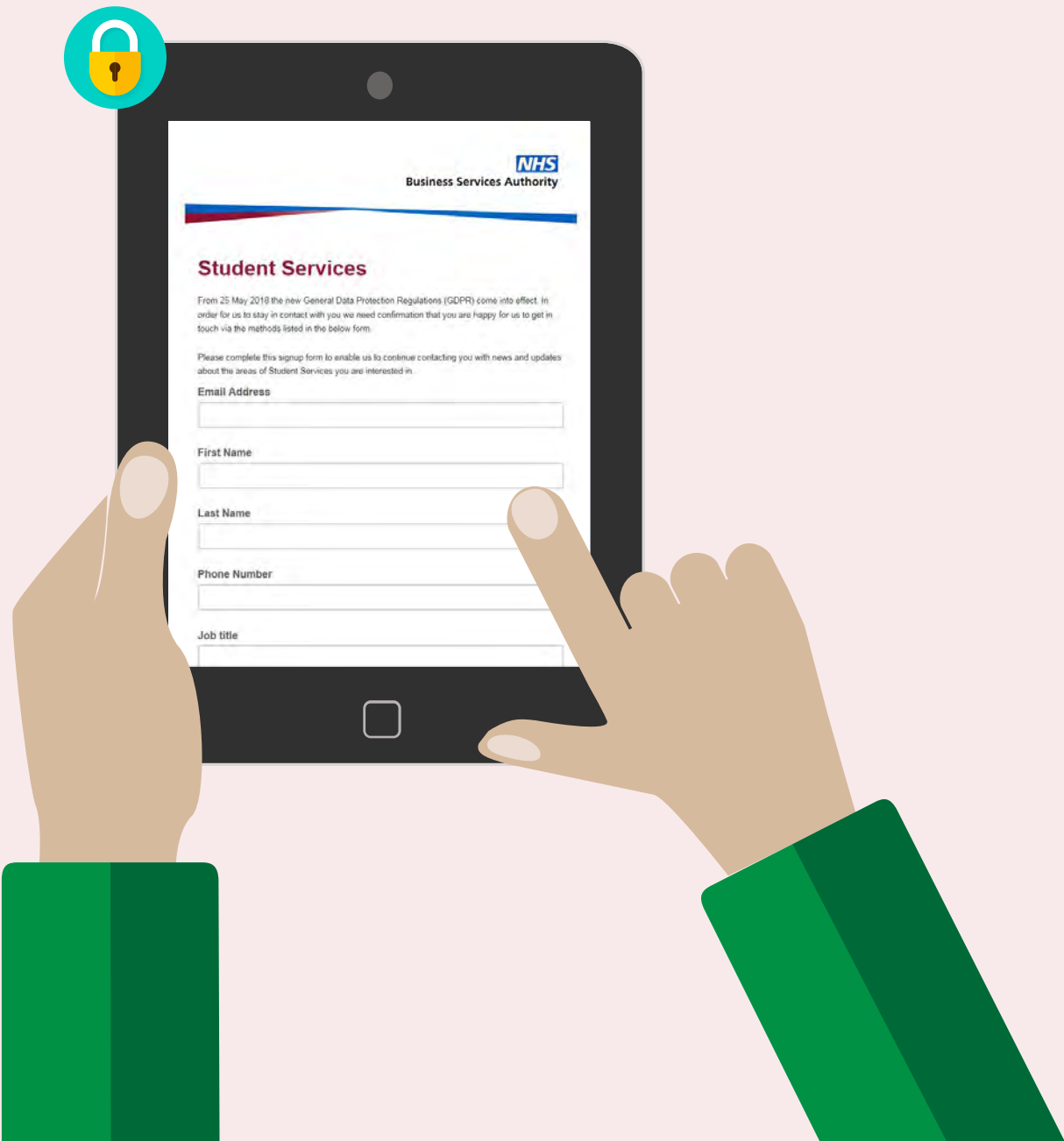


Contact list reminder

In the last edition of Student Services News we mentioned we’re updating our contact list to comply with GDPR and give it a general refresh.

Thank you to everyone who has signed up so far. If you have any colleagues who would like to be kept up to date with information about Student Services, or need to be on the list for administrative purposes, please can you ask them to [sign up using this link](#). You can also find this link on our website on the main [Information for universities and colleges](#) page.

From 31 August 2018 we will phase out the use of our old contact list so it’s important you’re signed up to the new list so we can keep in touch.



Funding update for Postgraduate, Dental Therapy/Dental Hygiene courses

New students attending a pre-registration undergraduate eligible healthcare courses (listed below) on or after 1 August 2017 have been able to apply for additional funding via the Learning Support Fund:

- Dietetics
- Midwifery
- Nursing (adult, child, mental health, learning disability, joint nursing/social work)
- Occupational therapy
- Operating department practitioner
- Orthoptics
- Orthotics and prosthetics
- Physiotherapy
- Podiatry/chiropractic
- Radiography (diagnostic and therapeutic)
- Speech and language therapy

[From 1 August 2018](#) new students attending a pre-registration Postgraduate versions of the healthcare courses listed above and Dental Therapy/Dental Hygiene courses will also be eligible to apply for funding support from the Learning Support Fund, the only exceptions being for five Dental Therapy/Dental Hygiene courses at the following institutions, who are eligible to apply for an [NHS Bursary](#) and as such cannot claim LSF:

- Birmingham Dental Hospital and School of Dentistry
- Bristol Dental School
- Eastman Dental Hospital
- Greater Manchester School for Dental Care Professionals
- King’s College Hospital Foundation Trust



NHSBSA celebrates NHS at 70!

Staff from across the NHSBSA held various events to mark this momentous occasion, and Hesketh House was part of this.

At 12pm staff descended on the canteen to take part in the day. There was a tombola, silent auction, coin rolling and even ice lollies to keep cool in the glorious weather. Staff managed to raise over £5,000 across all the sites which will be put towards our overall fundraising total for the British Heart Foundation.

Of course, no party would be complete without a cake, and the one at Hesketh House didn't disappoint! Staff celebrating a big birthday this year were invited to have a picture and first pick of cake.

A presentation took place at 12pm by two midwives who discussed the changes to the NHS they have seen over the years and this was broadcast to other sites by video conference from our headquarters at Stella House.

At Hesketh House, we were lucky to be joined by staff and pupils from Flakefleet Primary School who had placed in our colouring competition. The pupils were given goodie bags and treated to lunch, as well as collecting their prizes from the competition. Congratulations to you all!

At night, landmarks across the country were lit up in NHS blue to mark the end of a wonderful day. You can see pictures on these on Twitter on the hashtag #LightUpBlue #NHS70.

Happy 70th Birthday NHS!



70
YEARS
OF THE NHS
1948 - 2018



British Heart Foundation charity partner

We are pleased to announce that the NHSBSA has chosen the **British Heart Foundation (BHF)** as our charity partner for 2018.



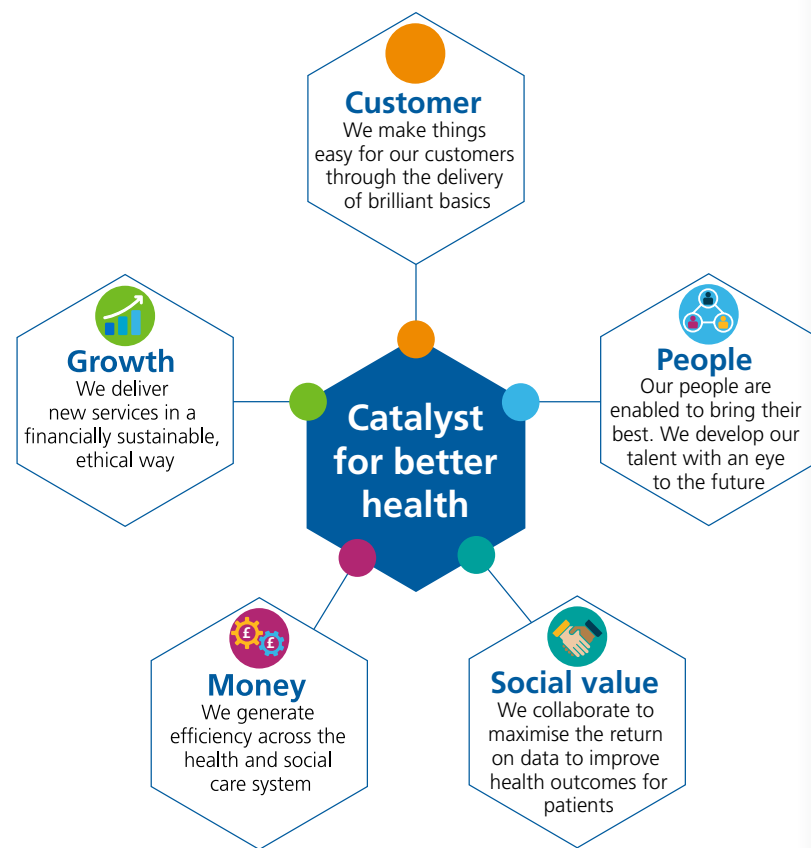
Throughout the year staff will be holding a variety of fundraising activities and events with the aim of raising £25,000.00 for the BHF to help their important research into heart and circulatory diseases. We'll let you know how we get on!

NHSBSA strategy

In April 2018 the NHSBSA launched our new strategy. The strategy sets out our ambition to become a catalyst for better health across the NHS and how we aim to achieve this.

We also launched our new values to show we care about the NHS and our customers. The values are beacons to which all staff should embody; Collaborative, Adventurous, Reliable and Energetic.

You can read more about the new strategy and our vision to become the delivery partner of choice for the NHS [on our website.](#)



Annual Report 2017/18

The **Student Services Annual Report for 2017/18** is now available and you can view it on our website. This provides a summary of our performance and activities from the past year.



Can you find the 21 words hidden in this word search, they all relate to Student Services.

- | | |
|---------------|---------------|
| ACCOMMODATION | LOAN |
| APPLICATION | PAYMENT |
| DEBT | STUDENT |
| EVIDENCE | APPEAL |
| INCOME | COURSE |
| NURSING | ELIGIBLE |
| PLACEMENT | HARDSHIP |
| ALLOWANCES | MIDWIFERY |
| BURSARY | PHYSIOTHERAPY |
| DEPENDANTS | UNIVERSITY |
| EXCEPTIONAL | |

N	V	D	G	E	L	L	P	D	U	D	L	A	Y	E
L	O	A	E	A	M	I	O	N	N	A	E	L	P	L
T	Q	I	E	P	H	O	I	A	N	P	S	L	A	B
J	N	P	T	S	E	V	C	O	N	A	R	O	R	I
N	P	E	D	A	E	N	I	N	B	Y	U	W	E	G
A	U	R	M	R	D	T	D	U	I	M	O	A	H	I
Y	A	R	S	E	P	O	R	A	T	E	C	N	T	L
H	Z	I	S	E	C	S	M	S	N	N	W	C	O	E
P	T	X	C	I	A	A	U	M	K	T	Q	E	I	Y
Y	Q	X	F	R	N	K	L	H	O	M	S	S	S	D
O	E	J	Y	A	Q	G	Y	P	N	C	X	H	Y	L
A	P	P	L	I	C	A	T	I	O	N	C	E	H	Q
E	V	I	D	E	N	C	E	D	E	B	T	A	P	E
Y	R	E	F	I	W	D	I	M	U	G	K	F	T	N
T	N	E	D	U	T	S	N	D	K	R	W	Y	Y	H

Reporting concerns of fraud

Do you have any suspicions of bursary fraud happening in your university?

Suspensions can be reported in confidence to the NHS Counter Fraud Authority.

Telephone:

0800 028 40 60

(Monday to Friday 8am to 6pm)

Online: www.cfa.nhs.uk
(anytime)



Stop Fraud

Your dedicated helplines



If you have a query and can't find the answer on **Ask Us**, our online self-help enquiry system, you can call our advisors on:

NHS Student Bursaries

 **0300 330 1372**

Social Work Bursaries

 **0300 330 1342**

Learning Support Fund

 **0300 330 1372**