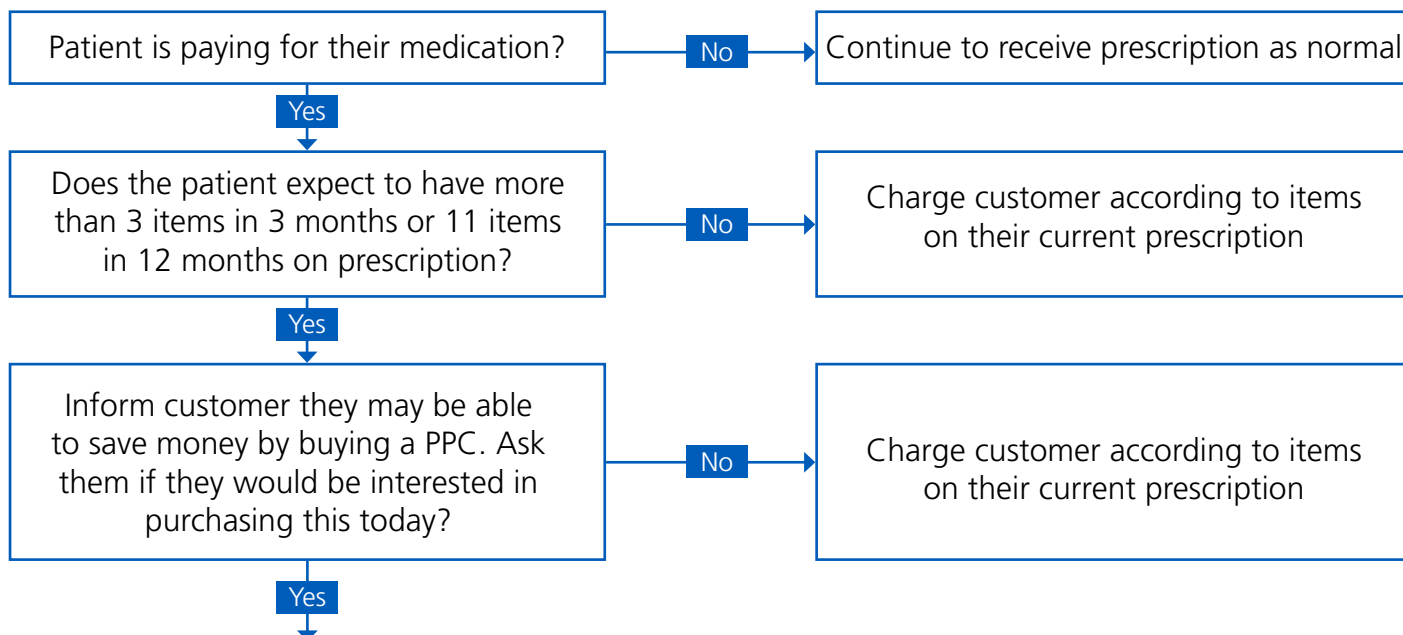


Prescription Prepayment Certificate (PPC) Process



Number of prescribed medicines you need each month	Saving with a 12 month PPC	Saving with a 3 month PPC
2	Over £105 a year	Over £20 in 3 months
3	Over £210 a year	Over £50 in 3 months
4	Over £315 a year	Over £75 in 3 months

Collect the information needed to process a PPC

Remind the customer that if they provide an email address, the certificate can be sent by email straight away

Process the application through pharmacy sales online
<https://apps.nhsbsa.nhs.uk/pharmacy-ppc/PharmacyLoginPage.do>

Please remember

Customers can check if they are eligible for help with their health costs at www.nhsbsa.nhs.uk/check

As long as the PPC covers the date of dispensing, the customer can collect their prescriptions for free.

They should mark box 'F' on the back of the prescription form and sign the declaration.

If you don't see the certificate, please cross the 'exemption not seen' box.

Customers can check their exemption status at:
<http://services.nhsbsa.nhs.uk/check-for-help-paying-nhs-costs/start-exempt>